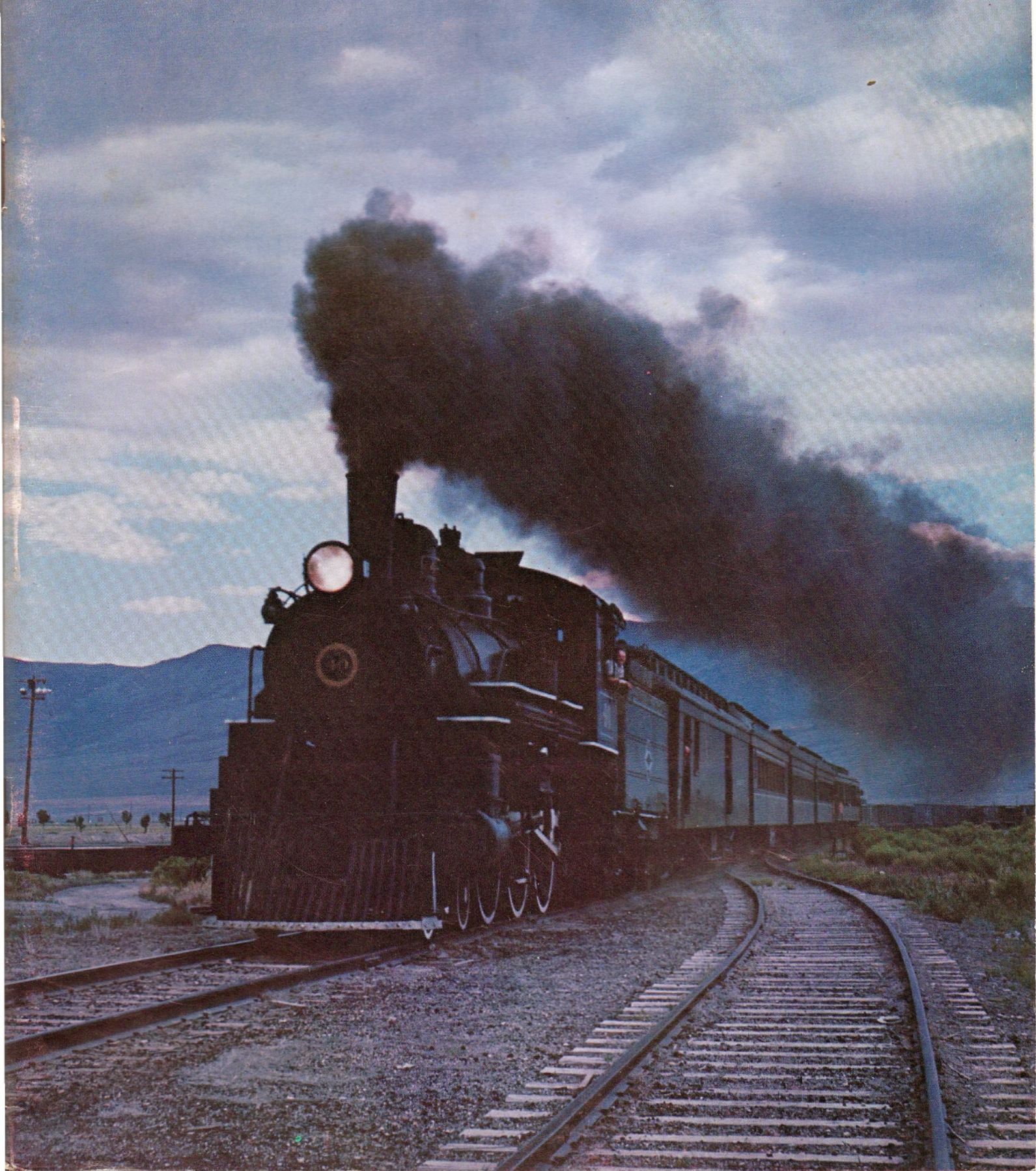


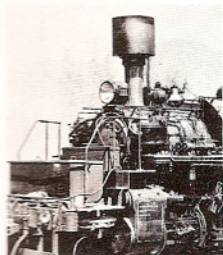
NARROW GAUGE AND SHORT LINE GAZETTE

Accurate Information for Fine Modelbuilding - March, 1977 \$1.50

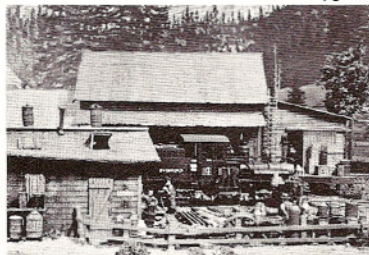




pg. 50



pg. 62



pg. 40

Robert W. Brown, Editor
Charles H. Givens, Publisher
Gordon D. Cannon, Caveat Emperor

The **NARROW GAUGE and SHORT LINE GAZETTE** is published bimonthly in March, May, July, September, November and January by Gazette Publications, P.O. Box 1046, Felton, CA 95018.

SUBSCRIPTION RATES:

United States & Canadian Rates:

\$8.00 per year2nd Class Mail
\$17.50 per year1st Class Mail

Overseas Rates:

\$10.50 per yearSurface
\$18.00 per yearAir, Europe
\$21.00 per yearAir, Pacific
(U.S. funds please)

Currently Available Back Issues:

Vol. 1, #6 (January, 1976)
Vol. 2, #1 (March, 1976)
Vol. 2, #4 (September, 1976)
Vol. 2, #5 (November, 1976)

All back issues are \$1.50 and are sent 2nd class, post paid.
Please allow three to four weeks for delivery.

All correspondence relating to subscriptions, advertising (Commercial and Riptrack), and back issues of the **Gazette** should be sent to the General Manager, Gazette Publications, P.O. Box 1046, Felton, CA 95018.

ADVERTISERS and DEALERS, please contact the General Manager for rate cards and dealer discount information.

Any correspondence relating to editorial subjects, i.e. contributions or commentary, should be directed to the editor:

Bob Brown
985 Campbell Ave.
Los Altos, California
94022

Second class postage paid at Felton, CA 95018 and at additional entry offices.

Printed in U.S.A. Copyright 1977, Gazette Publications.
All rights reserved.

March, 1977

FEATURES

- 22 Narrow Gauge in Ohio.**
112 miles of three foot in the wilds of Ohio.
by James Scott Eakin.
- 28 Clipped Wings.**
The Galloping Geese in 1976.
by Charlie Getz
- 34 Old-Time Grist Mill.**
An 1890's industry for your railroad.
by Irv Schulz.
- 40 Why Wait?**
Modules make sense.
by Andy Moore.
- 50 Salvage to Showpiece.**
An OR&W coach rises from the junkyard.
by Edwin Dallas Kennedy.
- 58 Notes for the Extremely Narrow-Minded.**
Two-foot (more or less) from everywhere.
by Bill Jensen.
- 60 Sn3 Happenings.**
What's new in 3/16" narrow gauge.
by Slim Lynzs
- 62 Logging Mallets — Part Seven.**
Variations on a theme plus detailing ideas.
by Ken Schmelzer

DEPARTMENTS

- 5 Roberts Ramblings**
- 8 New in Review**
- 14 The Narrow Gauge Scene**
- 44 Gazette Gallery**
- 56 Straight Talk About Bent Pipes**
- 65 Rip Track**

COVER

A summer evening in 1964 finds Nevada Northern #40 rolling a railfan special at forty miles per hour through East Ely, Nevada. The early 20th century Baldwin ten-wheeler was the passenger engine for this copper-hauling Nevada short line. Although the equipment still exists, it faces an uncertain future.
C. H. Givens Photo