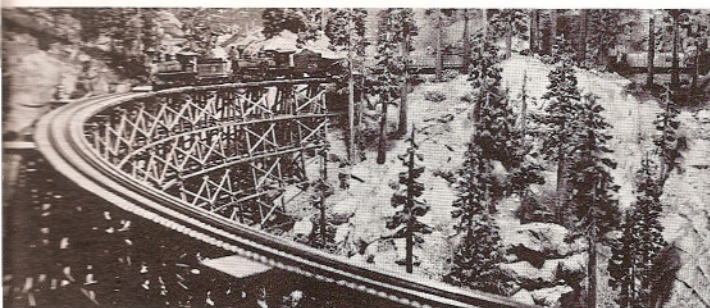


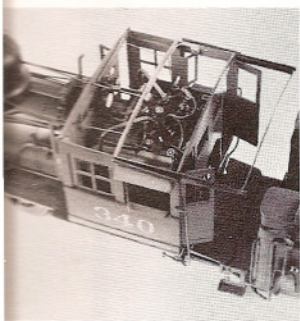
NARROW GAUGE AND SHORT LINE GAZETTE

Accurate Information for Fine Modelbuilding - May, 1977 \$1.50





pg. 22



pg. 34

Robert W. Brown, Editor
Charles H. Givens, Publisher
Gordon D. Cannon, Ghost of Christmas Past

The **NARROW GAUGE and SHORT LINE GAZETTE** is published bimonthly in March, May, July, September, November and January by **Gazette Publications**, 800 San Antonio Road, Suite 2, Palo Alto, CA 94303.

SUBSCRIPTION RATES:

United States & Canadian Rates:

\$8.00 per year2nd Class Mail

\$17.50 per year1st Class Mail

Overseas Rates:

\$10.50 per yearSurface

\$18.00 per yearAir, Europe

\$21.00 per yearAir, Pacific
(U.S. funds please)

Currently Available Back Issues:

January, 1976

March, 1976

July, 1976

September, 1976

November, 1976

March, 1977

All back issues are \$1.50 and are sent 2nd class, post paid.
Please allow three to four weeks for delivery.

WE MOVED

GAZETTE PUBLICATIONS
800 San Antonio Road, Suite 2
Palo Alto, CA 94303

All correspondence should be sent to the above address.

Second class postage paid at Felton, CA 95018 and at additional entry offices.

Printed in U.S.A. Copyright 1977, Gazette Publications.
All rights reserved.

May, 1977

SPECIAL FEATURE

- 22 Scenery — Gazette Style.**
Cover that bare plaster: here's how.
by Paul Scoles

FEATURES

- 28 Back in the "Good Old Days".**
Railfanning in the Thirties.
by Ted Wurm
- 32 Narrow Gauge Scene, Special Report.**
The boys in the band take over SSLtd.
by Charlie Getz
- 34 Locomotives of Kelley Morris.**
A trio of On3 jewels.
by Kelly Morris
- 44 On3 Modeling.**
1/4" narrow gauge on a budget.
by Gordon North
- 56 Assembling Leetown Climax—Pt. 4**
It's finally looking like a real locomotive.
by Bob Brown
- 60 Pajaro Valley Portrait.**
Locos of the Dead Beet Line.
by Bob Brown
- 63 Sn3 Boxcar Conversion**
Take one HO boxcar and add ...
by Roger Schenk
- 66 Michigan Vignette**
Irv Schultz strikes again.
by Bob Brown
- 68 Passenger Truck Conversion for On2.**
Putting the squeeze on HO trucks.
by Allen W. Hansen
- 70 Feather River Lumber Co.**
That's quite a coffee table!
by Hal Gustafson

PLANS

- 38 Colorado & Southern No. 13.**
A narrow gauge baggage mail car.
by Kenneth Martin
- 58 Annapolis Post Office.**
An architectural gem from the Mother Lode.
by Russ Simpson
- 61 Pajaro Valley Grass Burner.**
Keep your mainline clear.
from the collection of H. W. Fabing

DEPARTMENTS

- 5 Roberts Ramblings**
- 8 New in Review**
- 16 The Narrow Gauge Scene**
- 46 Gazette Gallery**
- 52 Notes for the Extremely Narrow Minded**
- 62 Sn3 Happenings**
- 64 Straight Talk About Bent Pipes**
- 72 Rip Track**

COVER

Pelican Bay Rwy. & Navigation Co. engine #26, the Diablo, helped by Mogul #9, prepares to lift a heavy ore train out of Beaver Creek on a summer afternoon in 1895. Double-headers are required on virtually all freight trains running south out of Klamath due to heavy trains and steep grades. A description of the scenery techniques used on this HOn3 masterpiece begins on page 22.
Photo by Paul Scoles