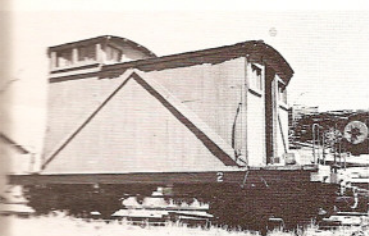


4-24

NARROW GAUGE AND SHORT LINE GAZETTE

Accurate Information for Fine Modelbuilding - September, 1977 \$1.50





Pg. 36



Pg. 28



Robert W. Brown, Editor
Charles H. Givens, Publisher
Suzanne E. Olson, Office Manager
Irene L. Brown, Comptroller
Nancy M. Givens, Assistant to the Publisher
Gene E. Deimling, Associate Editor
Charles W. Getz, Associate Editor

The NARROW GAUGE and SHORT LINE GAZETTE
is published bimonthly in March, May, July, September,
November and January by **Gazette Publications**, 800
San Antonio Road, Suite 2, Palo Alto, CA 94303.

SUBSCRIPTION RATES:

United States & Canadian Rates:

\$8.00 per year 2nd Class Mail
\$17.50 per year 1st Class Mail

Overseas Rates:

\$10.50 per year Surface
\$18.00 per year Air, Europe
\$21.00 per year Air, Pacific
(U.S. funds please)

Currently Available Back Issues:

July, 1976	January, 1977
September, 1976	March, 1977
November, 1976	May, 1977

All back issues are \$1.50 and are sent 2nd class, post paid.
Please allow three to four weeks for delivery.

GAZETTE PUBLICATIONS
800 San Antonio Road, Suite 2
Palo Alto, CA 94303

All correspondence should be sent to the above
address.

Second class postage paid at Palo Alto, CA 94302 and at
additional entry offices.

Printed in U.S.A. Copyright 1977, Gazette Publications.
All rights reserved.

September, 1977

SPECIAL FEATURE

24 Inexpensive Consolidation.

Notes on MDC's new HOn3 2-8-0.
by Paul Scoles and Lonnie Shay

FEATURES

28 "Fallberg."

A jewel of a stone depot.
by John Olson

32 The American Log Loader—Part 2.

More pictures and plans.
by Robert E. Sloan

36 West Side Caboose Story.

Words, pictures, plans—all we could want to know.
by Russ Simpson and Teresa McBride.

44 Ground Photogrammetry for Siderodrophomophiles.

Really, it's how to make scale drawings
from photos.
by Ben B. Massie

55 Ten Ton Sidewinder.

The smallest shay we've ever seen!
by Bob Brown

PLANS

48 30-inch Gauge Boxcars of the Ferrocarril Mexicano

by Ben B. Massie

DEPARTMENTS

- 5 Roberts Ramblings
- 8 New in Review
- 16 The Narrow Gauge Scene
- 47 Coming Events . . .
- 52 Straight Talk About Bent Pipes
- 54 Sn3 Happenings
- 57 Gazette Gallery
- 62 Notes for the Extremely
Narrow Minded
- 64 Rip Track

COVER

Mescal Lines RR #22 simmers patiently just short of the Fallberg platform
while taking on water and oil. The sun sets unnoticed by our prospective
passengers and station agent. Typical of Eastern Sierra evenings in
September the western skies are ablaze.

Photo by John Olson. Backdrop artistry by Ed Johnson.