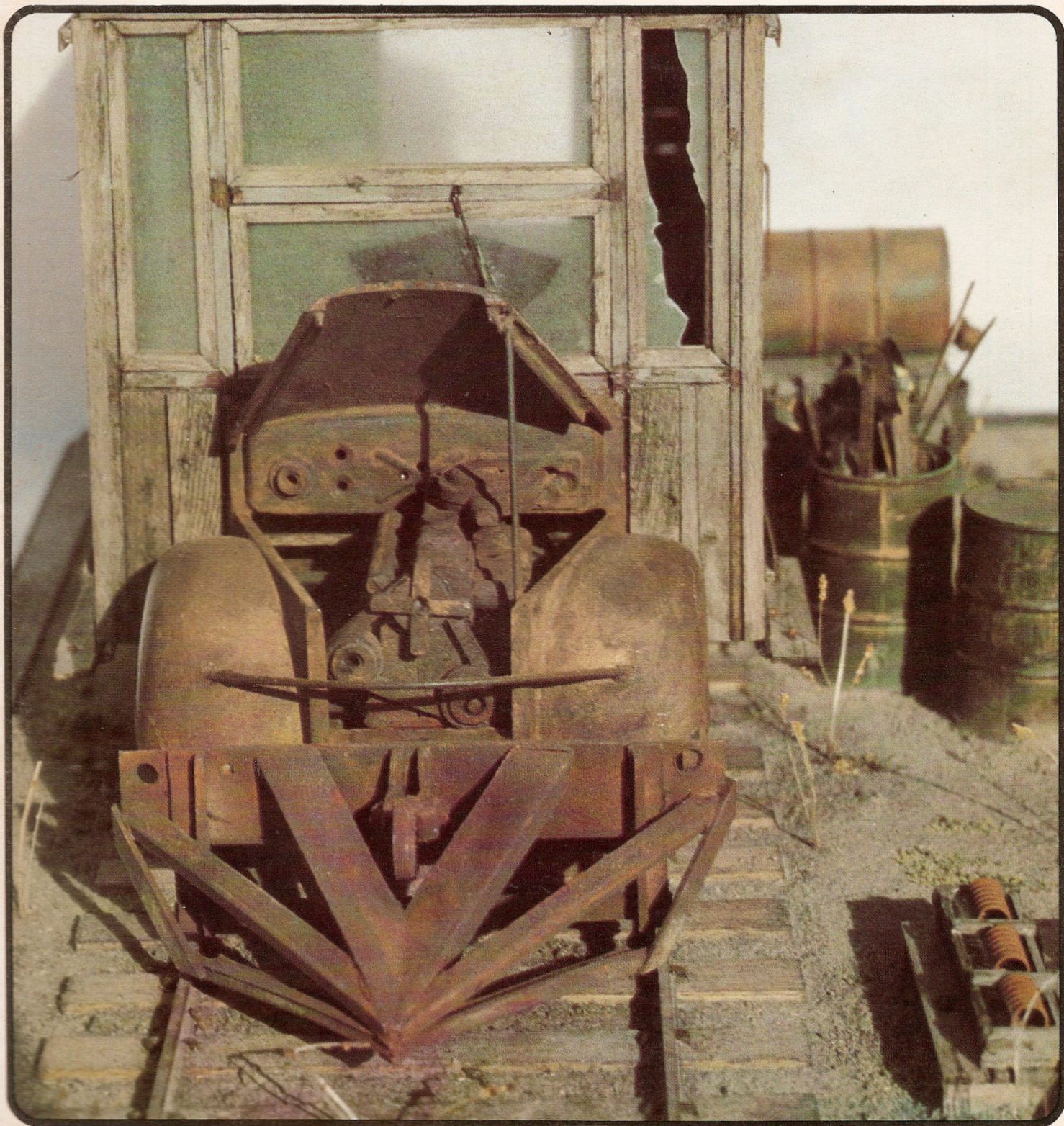
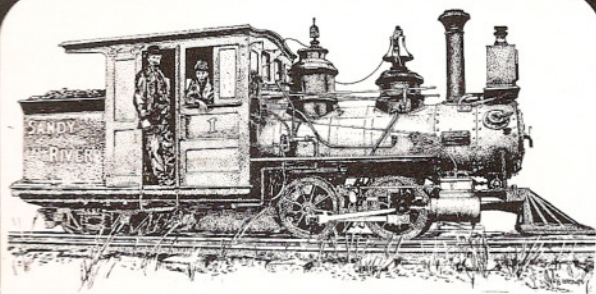


# NARROW GAUGE AND SHORT LINE GAZETTE

*Accurate Information for Fine Modelbuilding—Jul/Aug 1978 \$2.25*







**Robert W. Brown**  
Editor & Publisher

**Irene L. Brown, Business Manager**

**Suzanne E. Olson, Office Manager**

**Gene E. Deimling, Associate Editor**  
**Charles W. Getz, Associate Editor**

#### Contributors

<i>Richard Andrews</i>	<i>Irv Schulz</i>
<i>Alan Armitage</i>	<i>Paul Scoles</i>
<i>Charles Givens</i>	<i>Lonnie Shay</i>
<i>Bill Jensen</i>	<i>Robert Sloan</i>
<i>Gordon North</i>	<i>Ted Wurm</i>

The NARROW GAUGE and SHORTLINE GAZETTE is published bimonthly in March, May, July, September, November and January by Gazette Publications, One First Street, Suite C, P.O. Box 26, Los Altos, CA 94022.

#### SUBSCRIPTION RATES

##### United States Rates

2nd class mail ..... \$12.50 per year  
1st class mail ..... \$20.00 per year

##### Foreign Rates (including Canada)

Surface ..... \$15.00 per year  
Air, Canada ..... \$22.00 per year  
Air, Europe ..... \$25.00 per year  
Air, Pacific ..... \$29.00 per year

(U.S. funds please)

#### DEALER INFORMATION

Dealers in U.S.A. write for dealer terms directly to Gazette Publications, P.O. Box 26, Los Altos, CA 94022 U.S.A.

#### GAZETTE PUBLICATIONS

One First Street, Suite C  
P.O. Box 26  
Los Altos, CA 94022

All correspondence should be sent to the above address.

Second Class postage paid at Los Altos, CA 94022 and at additional entry offices.

Printed in U.S.A. Copyright 1978, Gazette Publications. All rights reserved.

## SPECIAL FEATURE

- 29 Colorado Narrow Gauge Tank Cars - Part 1**  
The UTLX cars.  
*by Robert E. Sloan*

## FEATURES

- 35 Splits, Cracks, and Knotholes, the Art of Weathering Wood**  
A distressing story.  
*by Marshall "Mic" Greenberg*
- 42 Erie & Michigan Ry. & Navigation Co. Box Car**  
Shortest short line?  
*by Irv Schulz*
- 44 The Midland Terminal Revisited**  
Memories.  
*by Art Wallace*
- 51 The Indiana & Rio Grande Railroad**  
A dream come true.  
*by Ed Luczak, et al.*
- 53 The Shasta Lumber Co. #1**  
A real Coffey grinder.  
*by Bill Coffey*
- 56 A Visit to Magnuson Models**  
Casting the Victorian scene.  
*by Lee Gustafson*
- 59 The Modelmakers Notebook**  
So you think you are finished...?  
*by Al Armitage*

## PLANS

- 40-41 Sierra Ry. Picnic Cars**  
*by Al Barker*

## DEPARTMENTS

- 5 Robert's Ramblings**  
**7 The Pigeon Hole**  
**16 New In Review**  
**24 The Narrow Gauge Scene**  
**48 Notes For the Extremely Narrow Minded**  
**62 Straight Talk About Bent Pipes**  
**64 Gazette Gallery**  
**69 Book Reviews**  
**76 Riptrack**

## Cover

This weathering is a product of the artistry of Mic Greenberg. Mic has developed several new techniques for weathering wood, plastic, and metal. See Mic's article on weathering wood on page 35 of this issue. *Photo by Mic Greenberg.*