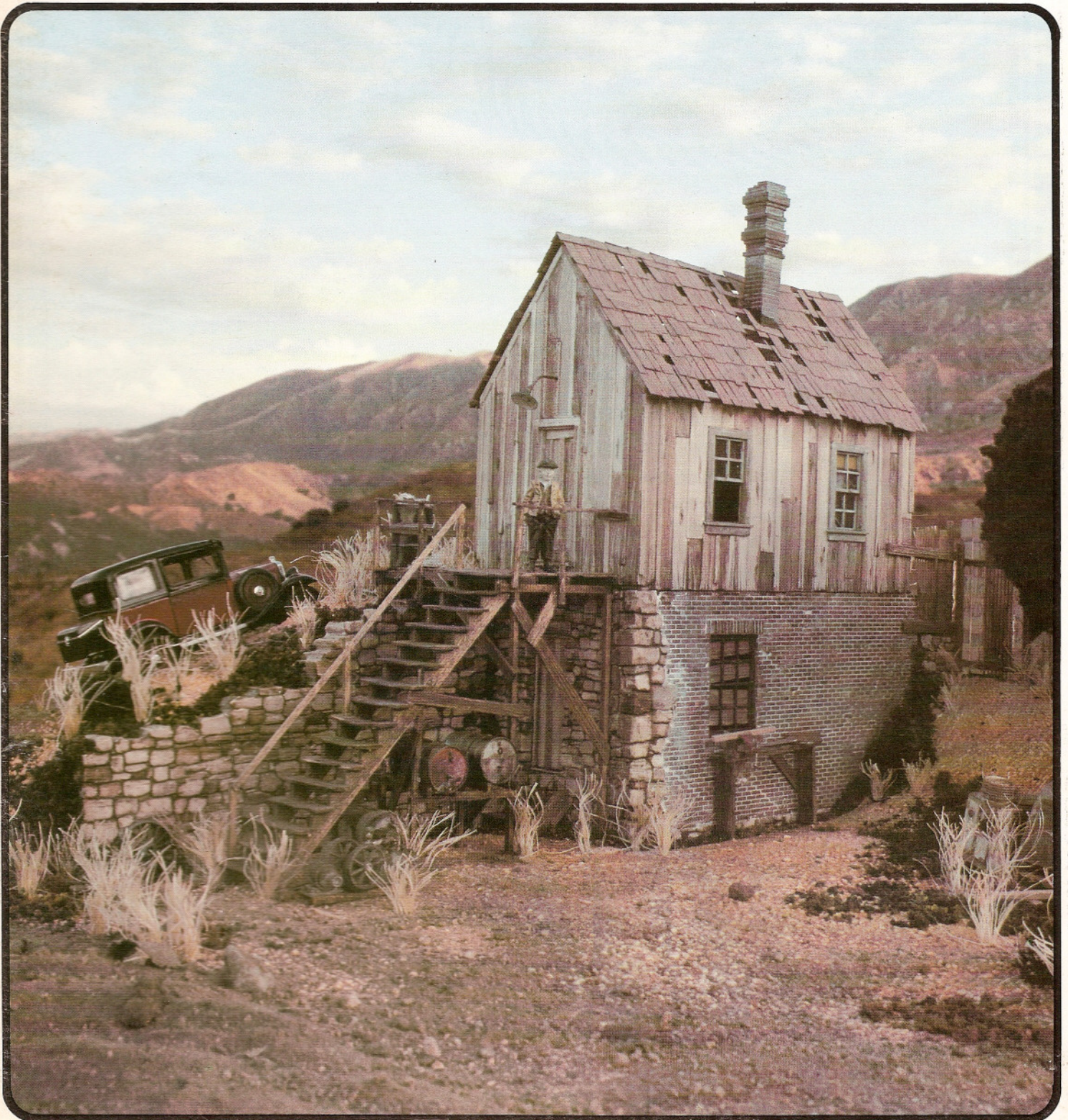
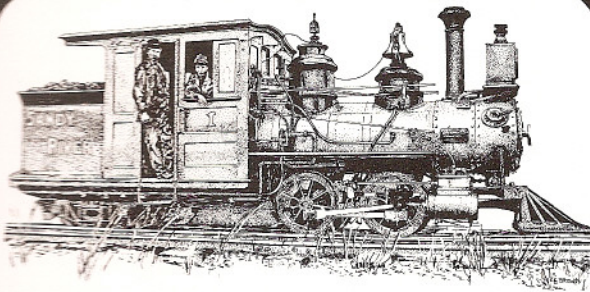


NARROW GAUGE AND SHORT LINE GAZETTE

Accurate Information for Fine Modelbuilding—Nov/Dec 1978 \$2.25





Robert W. Brown
Editor & Publisher

Irene L. Brown, Business & Office Manager

Gene E. Deimling, Associate Editor
Charles W. Getz, Associate Editor

Contributors:

<i>Richard Andrews</i>	<i>Gordon North</i>	<i>Lonnie Shay</i>
<i>Alan Armitage</i>	<i>Irv Schulz</i>	<i>Robert Sloan</i>
<i>Charles Givens</i>	<i>Paul Scoles</i>	<i>Ted Wurm</i>

The NARROW GAUGE and SHORTLINE GAZETTE is published bimonthly in March, May, July, September, November and January by Gazette Publications, One First Street, Suite C, P.O. Box 26, Los Altos, CA 94022.

SUBSCRIPTION RATES

United States Rates	
2nd class mail	\$12.50 per year
1st class mail	\$20.00 per year
Foreign Rates (including Canada)	
Surface	\$15.00 per year
Air, Canada	\$22.00 per year
Air, Europe	\$25.00 per year
Air, Pacific	\$29.00 per year

(U.S. funds please)

DEALER INFORMATION

Dealers write for dealer terms directly to Gazette Publications, P.O. Box 26, Los Altos, CA 94022 U.S.A.

GAZETTE PUBLICATIONS

One First Street, Suite C
P.O. Box 26
Los Altos, CA 94022

All correspondence should be sent to the above address.

Second Class postage paid at Los Altos, CA 94022 and at additional entry offices.

Printed in U.S.A. Copyright 1978, Gazette Publications. All rights reserved.

SPECIAL FEATURE

- 40 Coloring Plaster Buildings**
Bringing Color to your scene.
by Tom Yorke

FEATURES

- 27 Upgrading Your Sound System, Part III**
Sound system installations.
by Gordon North
- 34 Whiting Logging Railroad**
A story of men and machines.
by Dick Andrews
- 39 RGS Ditcher 030 in HOn3**
A first effort, done well.
by Justin Crom
- 46 The Ivory Soap Cars**
Another classic bill board car.
by Irv Schulz
- 50 The Model Makers Notebook**
Something different in roofs, part 2.
by Al Armitage
- 53 The Uintah Railway**
A twilight view.
by Ted Wurm
- 63 The South Park in HOn3**
A realistic concept.
by Dale Fleming

PLANS

- 65 Farmers Bank Building, Ridgway, Colorado**
by Karl E. Parshall
- 44 LIMA Shay No. 122**
by Al Armitage courtesy Precision Scale Co.
- 48 The Virginia & Truckee Empire**
by Gary Caviglia

DEPARTMENTS

- 5 Robert's Ramblings**
- 7 The Pigeon Hole**
- 16 New In Review**
- 24 The Narrow Gauge Scene**
- 56 The Gazette Gallery**
- 60 Straight Talk About Bent Pipes**
- 69 Book Reviews**
- 84 The Rip Track**

COVER

This "wooden" shack is almost entirely cast in plaster. Tom Yorke built the model and photographed it for our cover. Tom describes how he achieves such a remarkable finish on his plaster models in this issue.