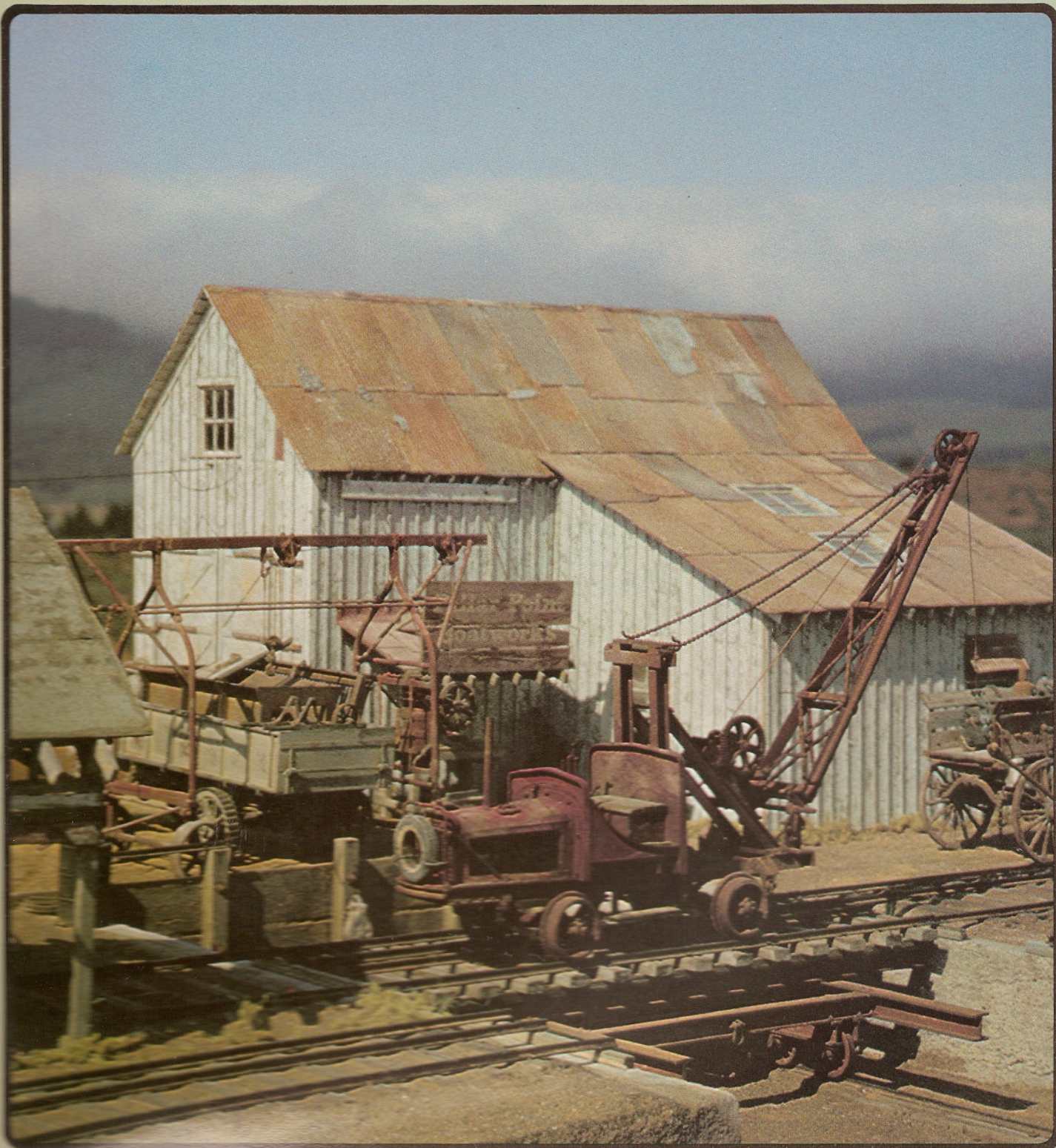
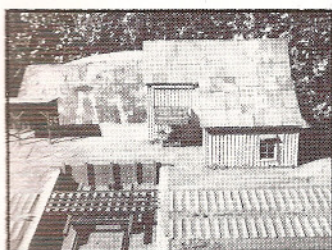


NARROW GAUGE AND SHORT LINE GAZETTE

Accurate Information for Fine Modelbuilding—Mar/Apr 1982 \$2.75



NARROW GAUGE AND SHORT LINE GAZETTE



MARCH/APRIL 1982

VOLUME 8, NUMBER 1

SPECIAL FEATURE

- 38 **Pillar Point Marine Railway**
Best In Show, 1981 NMRA Contest.
by Mic Greenberg

FEATURES

- 26 **Turning a Smoke Stack**
For the truly ambitious.
by Jack Burgess
- 28 **Realistically Speaking**
Making the most of small spaces, part 3.
by Gary Nash
- 30 **First Annual Gazette/Grandt Line Porter Contest**
First place winner.
by Gregory T. Helms
- 32 **Track, Track, Track**
Basic techniques for realism.
by Robert D. Hegge
- 44 **Up Clear Creek on the Narrow Gauge, Part 13**
Black Hawk on the UC&N.
by Harry Brunk
- 48 **The Model Makers Notebook**
A one man sawmill.
by Al Armitage
- 54 **Scratch Building Wooden Passenger Cars**
Basic techniques to get you started.
by Peter Tuttle
- 59 **A Small Anthracite Slope Mine**
The Anthracite Museum in Scranton, PA.
by Chuck Yungkurth
- 62 **My Favorite Logging Narrow Gauge**
The Mich/Cal Lumber Co.
by Ted Wurm
- 72 **Extra Narrow Gauge Junction**
A small turntable.
by Dick Andrews
- 76 **Colorado Central #4**
An approximation in HO_{N3}.
by Bruce Eaton
- 78 **Economy On3**
Converting the AHM HO Heisler.
by Phillip F. Nasca

PLANS

- 46-47 **Black Hawk on the UC&N**
by Harry Brunk
- 50-51 **A One Man Saw Mill**
by Al Armitage
- 52-53 **Log Carriage Details**
by Al Armitage
- 66 **Nusbaum Chemical Co. Heisler #3**
by Ed Gebhardt
- 68-69 **Virginia & Truckee Passenger Car Shed, Virginia City, NV**
by Gary Caviglia
- 70 **Able Supply Co. Mack Railbus**
by Rollin Whittick
- 72 **Bellerica & Bedford Turntable**
from Dick Andrews

DEPARTMENTS

- 5 **Robert's Ramblings**
- 7 **Pigeon Hole**
- 18 **New In Review**
- 21 **Bits and Pieces**
- 22 **In Brief**
- 24 **Narrow Gauge Scene**
Right In Your Own Back Yard
- 80 **Gazette Gallery**
- 85 **Book Reviews**
- 96 **Riptrack**

COVER

This worn and weathered boom truck was based on a picture of a military vehicle. It is but one example of the beautiful detail found on Mic Greenberg's superb model of the Pillar Point Marine Railway.