

NARROW GAUGE AND SHORT LINE GAZETTE

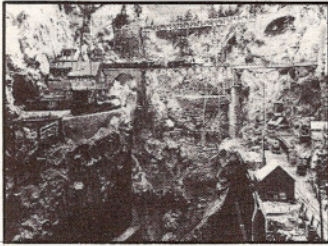
Accurate Information for Fine Modelbuilding—May/June 1982 \$2.75



NARROW GAUGE AND SHORT LINE GAZETTE

MAY/JUNE 1982

VOLUME 8, NUMBER 2



SPECIAL FEATURE

28 **Denver & Rio Chama Western**
A 9 x 9 foot Empire.
by Malcolm Furlow

FEATURES

- 27 **Converting the HO Tru-Scale Turnout to On3**
A nifty idea.
by W. Miles Hale
- 34 **The Alaska Gastineau and Its Mining Railroads**
Alaskan railroading.
by Don Marenzi
- 38 **The Many Parts of Louis Bartig, Jr.**
Craftsmanship in brass.
by Robert D. Hegge
- 42 **Rails Through the Sugar Cane**
Louisiana plantation railroads.
by Mallory Hope Ferrell
- 46 **The Rail Line Box Car**
Some practical advice.
by Jim Vail
- 52 **Box Cars of the Wiscasset Waterville and Farmington**
Sorting it all out.
by Peter Barney
- 56-57 **First Annual GAZETTE/GRANDT LINE Porter Contest**
Second place winners.
by William W. Davis and Bill Williams
- 60 **Realistically Speaking**
Making the most of small places.
by Gary Nash
- 62 **They Were Tiny — But So Were the Tracks**
A Presidential special.
by Charles Small
- 64 **Up Clear Creek on the Narrow Gauge, Part 14**
Forks Creek revisited.
by Harry Brunk
- 68 **The Innovative Joe Works**
Mini Land revealed.
by John Olson
- 72 **The Mighty Marion OQ**
An On3 Blue Ribbon Model.
by Reg Shaffer
- 76 **Extra Narrow Gauge Junction**
Dips, the Bellerica and Bedford, and a New England tale.
by Dick Andrews
- 79 **The Model Makers Notebook**
A one man sawmill, part 2.
by Al Armitage

PLANS

- 43 **South Side Plantation 0-4-4T in Two-Foot**
by Ed Gebhardt
- 50-51 **Virginia & Truckee, Virginia City, Nevada Freight Station**
by Gary Caviglia
- 66 **Forks Creek Pump House and Tool Shed**
by Harry Brunk
- 80-83 **Machinery Details for One Man Saw Mill**
by Al Armitage

DEPARTMENTS

- 5 **Robert's Ramblings**
- 7 **Pigeon Hole**
- 18 **New In Review**
- 21 **Bits and Pieces**
- 22 **In Brief**
- 24 **Narrow Gauge Scene**
Expand Your Horizons
- 84 **Gazette Gallery**
- 89 **Book Reviews**
- 96 **Riptrack**

COVER

The Durango Press On3 Marion steam shovel is a mighty machine. This color photograph shows Reg Shaffer's prize winning model at work on Joe Johansen's layout. This is the kind of detailed model that would look great on any layout. *Transparency by Reg Shaffer.*