

# NARROW GAUGE AND SHORT LINE GAZETTE

*Accurate Information for Fine Modelbuilding—Nov/Dec 1982 \$2.75*

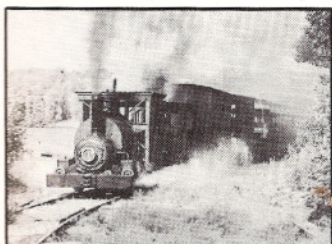




# NARROW GAUGE AND SHORT LINE GAZETTE

NOVEMBER/DECEMBER 1982

VOLUME 8, NUMBER 5



## SPECIAL FEATURE

- 34 Small Engines on a Short Run**  
The Huntsville and Lake of Bays Railway  
by Niall MacKay

## FEATURES

- 28 The Glenwood and Black Creek**  
An HO<sub>n3</sub> California road.  
by Jim Vail
- 33 Second GAZETTE/MDC Loco Bashing Contest**  
3rd place winner.  
by Dr. Joe Robert Pate
- 40 The Hancock & Calumet Railroad**  
The narrow gauge years.  
by Leon Schaddelee
- 46 The Original Central City Depot**  
Or Harry Brunk talked me into this.  
by Rick Steele
- 54 Up Clear Creek on the Narrow Gauge, Part 17**  
The Argo Tunnel - the Mill.  
by Harry Brunk
- 60 The Model Makers Notebook**  
Shoshone Depot.  
by Al Armitage
- 66 N News**  
Dealing with photo-engravings.  
by Tom Knapp
- 70 Realistically Speaking**  
Building a desk top layout; Part 2, the ties.  
by Gary Nash
- 72 A Portable Loading Ramp**  
An ideal beginning styrene project.  
by Wayne Wesolowski
- 76 Extra Narrow Gauge Junction**  
Philosophy and the Model T.  
by Dick Andrews
- 80 Precision Scale Rises from the Ashes**  
Going strong.  
by Irene Brown

## COVER

This issue's cover was painted by railroad artist, Joseph Wilhelm. It shows a southern Cypress swamp railroad which ran around Ponchatoula and Hammond, Louisiana. The railroad was called the "Dummy Line". It was owned by the Louisiana Cypress Lumber Company. Joe's painting is 16 x 20 inches and is now in the collection of Mr. and Mrs. Roy and Debra Elaine Rodgers. If you are interested in commissioning Joe to do a painting, write to him at 8540 Scottsdale Drive, New Orleans, LA 70127 or phone (504) 242-2082.

## PLANS

- 36 Huntsville & Lake of Bays**  
South Portage General Office
- 36 Huntsville & Lake of Bays**  
Flat Car
- 37 Huntsville & Lake of Bays**  
South Portage Water Tank
- 37 Huntsville & Lake of Bays**  
Freight Trucks  
*All above plans by Les Torrens*
- 42 Hancock & Calumet 2-8-0**  
by Leon Schaddelee
- 48 Central City, Colorado Yard**  
by Rick Steele
- 49 The Original Central City,**  
Colorado Passenger Depot  
by Rick Steele
- 50 Little River Lumber Co. 4-6-2**  
by Ed Gebhardt
- 62 Shoshone Depot**  
by Al Armitage
- 68 Virginia & Truckee, Virginia City,**  
Nevada Roundhouse  
by Gary Caviglia
- 73 Metal Loading Ramp**  
by Wayne Wesolowski

## DEPARTMENTS

- 5 Robert's Ramblings**
- 7 The Pigeon Hole**
- 18 New In Review**
- 21 Bits and Pieces**
- 22 In Brief**
- 24 Narrow Gauge Scene**  
*Where's the fire?*
- 84 The Gallery**
- 89 Book Reviews**
- 96 Riptrack**