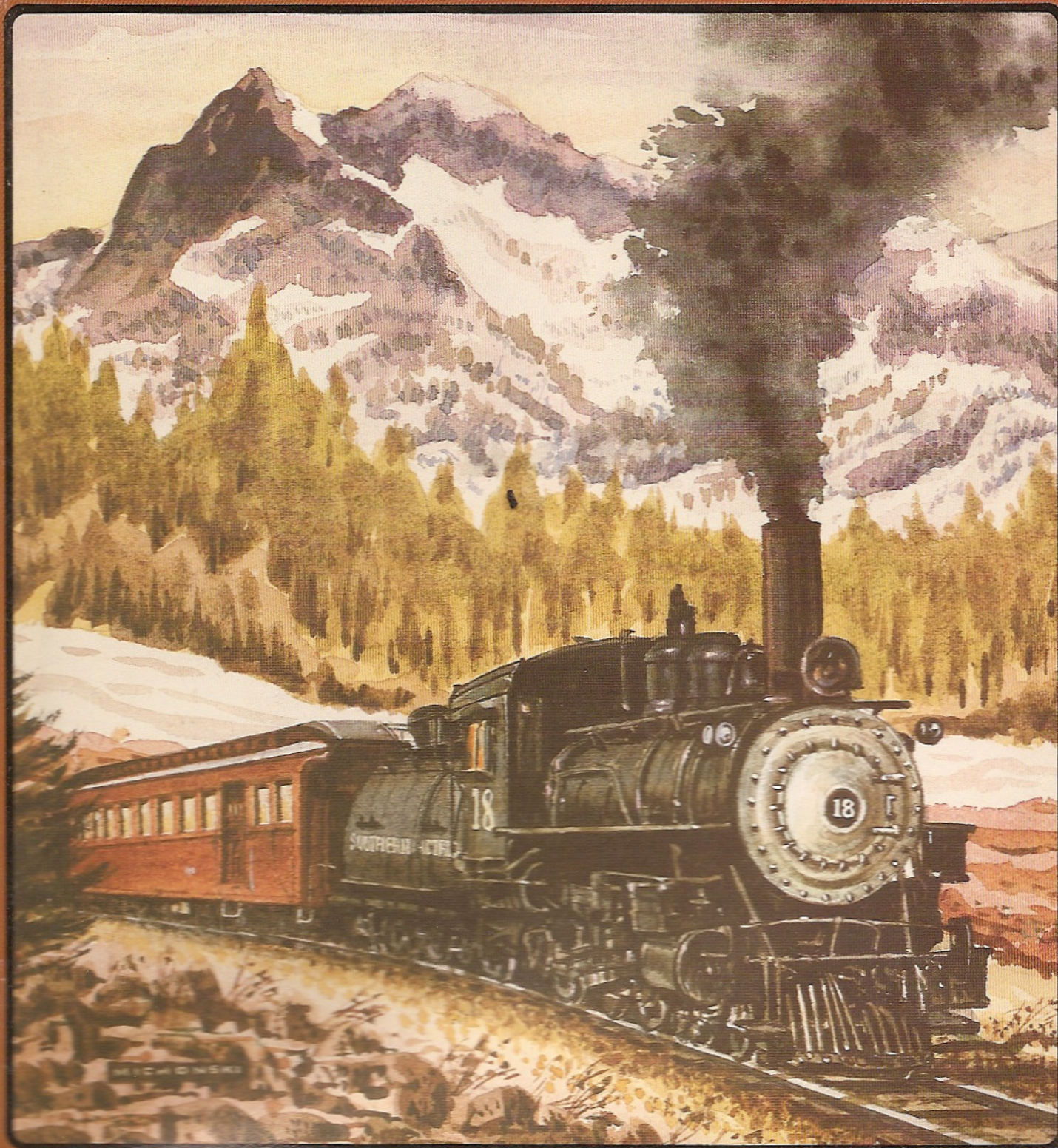


NARROW GAUGE AND SHORT LINE GAZETTE

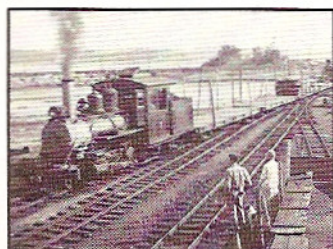
Accurate Information for Fine Modelbuilding—Mar/Apr 1983 \$2.75



NARROW GAUGE AND SHORT LINE GAZETTE

MARCH/APRIL 1983

VOLUME 9, NUMBER 1



SPECIAL FEATURE

- 28 **An On2 Wiscasset Module**
Down East Modeling.
by Peter Barney

FEATURES

- 32 **West Side Heisler #2, Part 2**
The superstructure and finish.
by Bob Love
- 36 **Three Inexpensive Diesel Conversions**
N to HO_n30 and HO to On3.
by Garry Cerrone, Larry Easton, and Jim Hill
- 41 **Black Hills & Fort Pierre Railroad, Part 2**
Pioneer narrow gauge short line.
by Scott Zieske
- 46 **The Corner "Horse" Depot**
Central City street scene.
by Rick Steele
- 48 **Up Clear Creek on the Narrow Gauge, Part 19**
Argo Tunnel—the model.
by Harry Brunk
- 52 **Colorado & Southern Steel Framed "Coal Cars"**
Make a dozen.
by Al Turner, Jr.
- 56 **Dynatrol**
Electronics for narrow gaugers.
by George Konrad
- 60 **Colorado Aspens**
A "must have" detail for Colorado modeling.
Terry Metcalfe
- 64 **Putting Mr. Muscle to Work**
Building the Yorke Surry Parker Log Loader
by Reg Shaffer
- 66 **The Southern Pacific Narrow Gauge**
An overview by Bob Bader—Laws by Dr. Nevin Wilson—
An E&B stock car conversion by Andy Pierce.
- 72 **The Model Makers Notebook**
A small oil loading facility.
by Al Armitage
- 74 **The Huntsville & Lake of Bays Railway**
An Album.
by Vince Ryan, Garrie Tufford, and Gordon Taylor
- 76 **Realistically Speaking**
Building a Desk Top Layout, Part 4: Track Detailing.
by Gary Nash
- 78 **N News**
What's new in the micro-world.
by Tom Knapp
- 80 **Extra Narrow Gauge Junction**
A flat topped switch-stand, etc ...
by Dick Andrews

PLANS

- 46-47 **Central City, Colorado Buildings**
by Rick Steele
- 50-51 **The Argo Tunnel, Side Elevations**
by Harry Brunk
- 62-63 **Virginia & Truckee Brill Coaches #11-12, Interior Detail**
by Gary Caviglia
- 73 **A Small Oil Loading Facility**
by Al Armitage

DEPARTMENTS

- 5 **Robert's Ramblings**
- 7 **The Pigeon Hole**
- 18 **New In Review**
- 22 **In Brief**
- 24 **Narrow Gauge Scene**
The Cumbres & Toltec
- 84 **The Gallery**
- 89 **Book Reviews**
- 96 **Riptrack**

COVER

When we think of the Southern Pacific Narrow Gauge we usually think of vast spaces and desolate scenery. However, the line did run over the 7,138 foot crest of Mount Montgomery Pass. Our cover artist Vic Michonski has chosen this Sierran setting for his fine water color of SPNG #18 working her way up the twisting grades of Mount Montgomery Pass. I hope to see more of Vic's fine work in the **GAZETTE**.