

NARROW GAUGE AND SHORT LINE GAZETTE

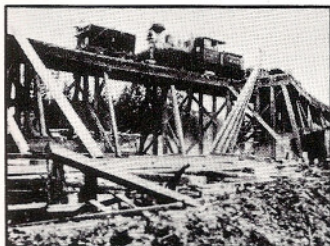
Accurate Information for Fine Modelbuilding - Jul/Aug 1984 \$2.75



NARROW GAUGE AND SHORT LINE GAZETTE

JULY/AUGUST 1984

VOLUME 10, NUMBER 3



SPECIAL FEATURE

- 22 **The Lenora Mount Sicker Railway**
An ambitious little narrow gauge.
by Darryl Muralt and Elwood White

FEATURES

- 27 **Homestake Mining Company Air Locomotives**
An accounting.
by Scott Zieske
- 28 **The Sawmill Chronicles, Part 1**
The single blade husk and second blade option.
by Reg Shaffer
- 30 **Modifying the Grandt Line Porter**
Five steps to success.
by Robert A. M. Stephens
- 37 **Head End Signals**
Telling them apart.
by Rick Steele
- 40 **Camp Eight**
An On3 logging diorama.
by Dan Downing
- 44 **Realistically Speaking**
Time out.
by Gary Nash
- 48 **Ore Processing, a Modeler's Perspective, Part 2**
The prototype grizzly and crusher.
by John Hitzeman
- 51 **The Model Makers Notebook**
Flumes - an unusual detail.
by Al Armitage
- 55 **Bennett's Creek on the Diablo Pass Line, Part 3**
The structures, trees, bushes, and other final details.
by Paul Scoles
- 60 **Detailing the Flying Zoo Climax**
Dressing her up.
by Robert Chilton
- 64 **Full Circle**
The story of the Georgetown Loop Highline.
by Robert W. McLeod
- 68 **Up Clear Creek on the Narrow Gauge, Part 27**
The Idaho Springs Machine Works
by Harry Brunk
- 72 **Scratch-Building a Florence & Cripple Creek Caboose**
A Gold Belt bobber.
by Julian Cavalier
- 76 **Extra Narrow Gauge Junction**
F&M birthday.
by Dick Andrews

PLANS

- 35 **Virginia & Truckee Carson City Oil House**
by Gary Caviglia
- 47 **An 18 Ton Climax**
by Ed Gebhardt
- 53 **Flume Detail**
by Al Armitage
- 70 **The Idaho Springs Machine Works**
by Harry Brunk

DEPARTMENTS

- 5 **Robert's Ramblings**
- 14 **New In Review**
- 16 **In Brief**
- 18 **Narrow Gauge Scene**
The Carson City Engine House
- 80 **Gazette Gallery**
- 82 **Book Reviews**

COVER

Keith Ward has captured all of the charm of the Rio Grande Southern in his beautiful acrylic painting of Goose #4 at Hesperus, Colorado in 1939.