

NARROW GAUGE AND SHORT LINE GAZETTE

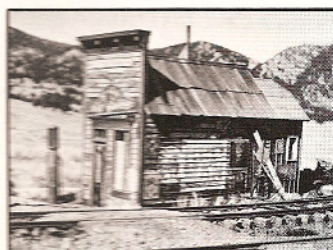
Accurate Information for Fine Modelbuilding - Sept/Oct 1985 \$3.25



NARROW GAUGE AND SHORT LINE GAZETTE

SEPTEMBER/OCTOBER 1985

VOLUME 11, NUMBER 4



SPECIAL FEATURE

- 42 Jefferson Dry Goods**
A derelict store in 1/2 inch scale.
by Joe Crea

FEATURES

- 18 Narrow Gauge Scene**
Reefer madness.
by Charlie Getz
- 20 Ardenwood Regional Preserve Opens:**
The South Pacific Coast runs again.
by Bob Brown
- 22 Making Sound Cams Quickly, Easily, and Inexpensively**
Choo choo.
by Frank Markovich
- 24 A Sierra Railway Gem:**
The Sonora, California station.
by Robert Pethoud
- 30 D&RGW Stock Car #5999 in Sn3**
Critter hauler.
by Jim Booth
- 33 Another Disconnected Log Truck**
Variations.
by Robert A. M. Stephens
- 35 Colorado in the Netherlands**
The Leadville Mining Railroad.
by Daniel van Aggelen
- 38 The Ephraim & Peshtigo Builds a Brace of Combines**
On30 scratch building.
by Tom Houle
- 48 The Sawmill Chronicles, Part 8**
The Log Haul.
by Reg Shaffer
- 52 Up Clear Creek on the Narrow Gauge, Part 34**
The Stanley Mine Complex.
by Harry Brunk
- 57 Camp 1 and Vicinity**
Operating in the woods.
by Robert A. M. Stephens
- 62 Ore Processing, a Modelers Perspective: Part 9**
Automatic feeders and amalgamating tables.
by John Hitzeman
- 75 The Model Makers Notebook**
An unusual water tank.
by Al Armitage
- 80 Extra Narrow Gauge Junction**
Porters of the Maine 2-Footers, Part 2
by Dick Andrews
- 84 The Truckee, California Jail**
Lock 'em up.
by Keith P. Everett

PLANS

- 28-29 Sonora, California Sierra Railway Depot**
by Robert Pethoud
- 33 Early Globe Disconnected Log Truck**
by Robert A. M. Stephens
- 40-41 Freelance Combine**
by Tom Houle
- 44-45 Jefferson Dry Goods Store**
by Joe Crea
- 50-51 Collins & Garrison Shay #349**
by Ed Gebhardt
- 68 to 73 The Virginia & Truckee Carson City Enginehouse, Part 1**
by Gary Caviglia
- 82 Wiscasset Waterville & Farmington #4**
by H.T. Crittenden
- 84-85 The Truckee, California Jail**
by Keith P. Everett

DEPARTMENTS

- 5 Robert's Ramblings**
- 12 New In Review**
- 15 In Brief**
- 86 Gazette Gallery**
- 91 Book Reviews**
- 95 Riptrack**

COVER

Several years ago Bill Leider visited the Durango & Silverton Railroad. His visit inspired him to paint the watercolor on the cover. Bill calls his painting "Narrow Gauge Nostalgia."