

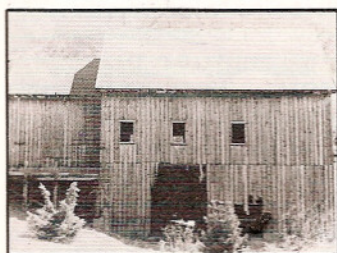
# NARROW GAUGE AND SHORT LINE GAZETTE

*Accurate Information for Fine Modelbuilding - Mar/Apr 1986 \$3.25*





# NARROW GAUGE AND SHORT LINE GAZETTE



MARCH/APRIL 1986

VOLUME 12, NUMBER 1

## SPECIAL FEATURE

- 22 **The Buffalo Boy Tram House**  
Too good to miss.  
by Don Meeker

## FEATURES

- 18 **The Narrow Gauge Scene**  
Reefer odds and ends.  
by Charlie Getz
- 30 **O Scale Trucks**  
Cheapies.  
by Garry Cerrone
- 34 **A Visit to the Durango Mining Company Railroad**  
Come visit in September.  
by Don Meeker
- 36 **Copper in the Mountains, Part 2**  
More desert narrow gauge.  
by Michael W. Conder
- 42 **Powell's Produce, Part 1**  
The structure.  
by Phil Hodges
- 45 **Radio Controlled, Battery Powered LGB**  
It's easy.  
by Reg Shaffer
- 56 **Building Yosemite Sugar Pine Lumber Company Camp 17, Part 2**  
The details.  
by Jack Burgess
- 62 **Up Clear Creek on the Narrow Gauge, Part 37**  
The Stewart & Wing Warehouse.  
by Harry Brunk
- 68 **Ore Processing, a Modeler's Perspective: Part 12**  
Finishing the gravity stamps.  
by John Hitzeman
- 74 **The Model Makers Notebook**  
Camp cars for your logging show.  
by Al Armitage
- 80 **The Sawmill Chronicles, Part 12**  
Arranging and driving the machinery.  
by Reg Shaffer
- 82 **Extra Narrow Gauge Junction**  
A New England bridge.  
by Dick Andrews

## PLANS

- 24-27 **Buffalo Boy Tram House**  
by Don Meeker
- 50-53 **West Side Shay #12**  
by Al Armitage
- 64-65 **Stewart & Wing Warehouse**  
by Harry Brunk
- 70-71 **A Baldwin 2-Foot Gauge Saddle Tanker**  
by Ed Gebhardt
- 73 **Virginia & Truckee, Carson City Enginehouse Door & Window Details**  
by Gary Caviglia
- 75 **Standard Gauge Disconnected Logging Truck**  
by Al Armitage
- 76-77 **A Cabin Car to Ride on Disconnected Trucks**  
by Al Armitage

## DEPARTMENTS

- 5 **Robert's Ramblings**
- 12 **New in Review**
- 16 **In Brief**
- 86 **Gazette Gallery**
- 91 **Book Reviews**
- 91 **Video Reviews**
- 96 **Riptrack**

## COVER

Gary Carter is a well-known western artist whose paintings are eagerly sought after by collectors. Gary is also a lover of railroads and has done several beautiful railroad paintings. Gary painted this month's cover especially for the **GAZETTE**. It shows Rio Grande Southern #461 pounding by with a stock extra. You can contact Gary at Box 241, Star Route, West Yellowstone, MT 59758.