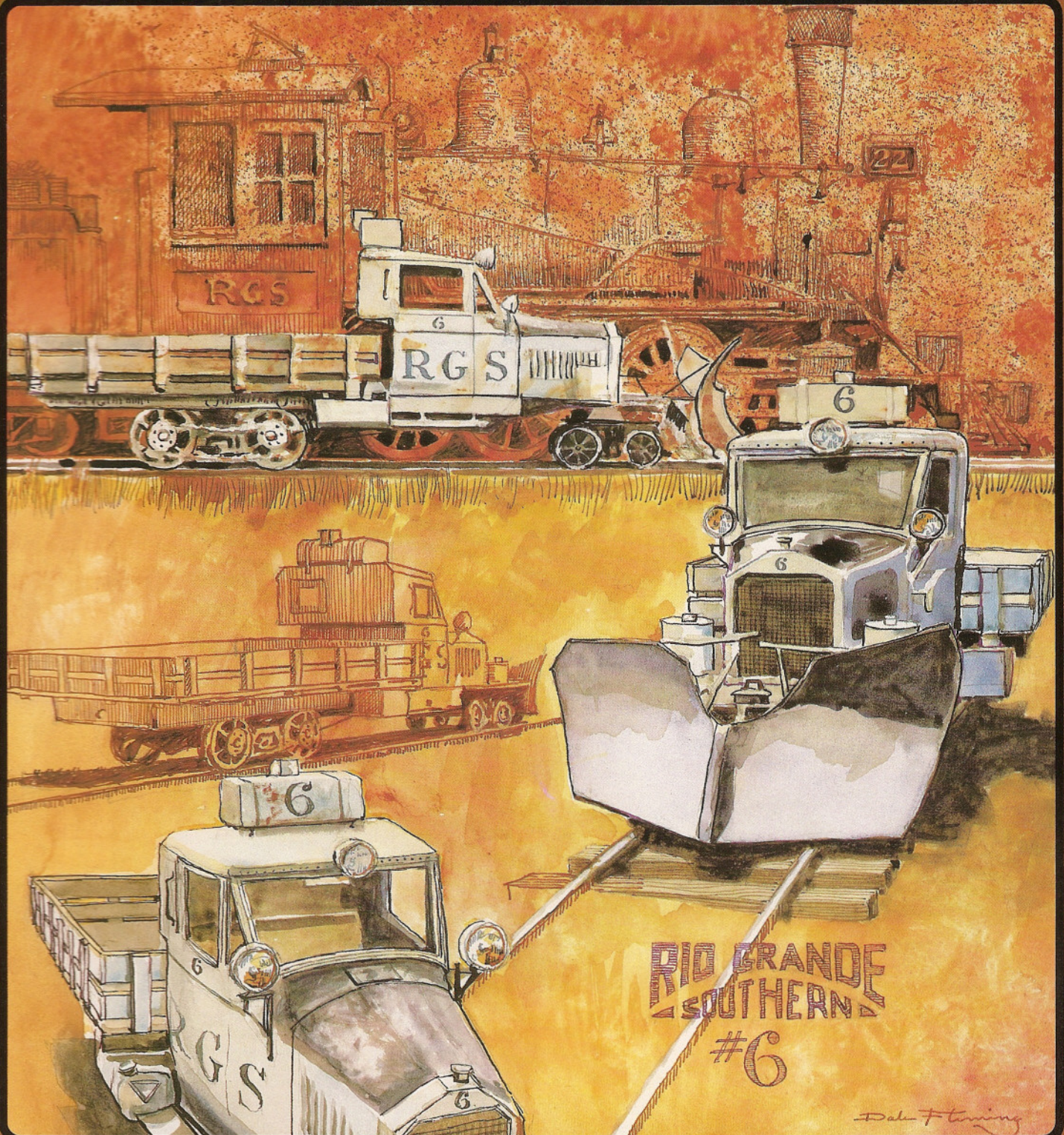


NARROW GAUGE AND SHORT LINE **GAZETTE**

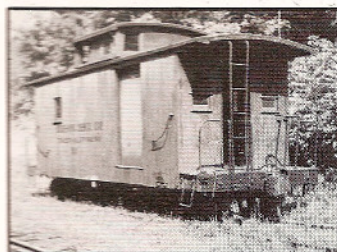
Accurate Information for Fine Modelbuilding - May/June 1986 \$3.25



NARROW GAUGE AND SHORT LINE GAZETTE

MAY/JUNE 1986

VOLUME 12, NUMBER 2



SPECIAL FEATURE

- 22** **The Cabooses of the Tionesta Valley Railroad**
A family of "cabeese."
by Edmund Collins III

FEATURES

- 18** **Sonora & Camino Mill #1**
Finkbine-Guild recreated.
by Dan Downing
- 34** **Tavares & Aucilla Railroad**
Fun in an alcove.
by Richard John Corte Allaire
- 38** **Powell's Produce, Part 2**
The scenic base.
by Phil Hodges
- 41** **Painting Figures for Model Railroads**
Try some.
by Shep Paine
- 44** **Ore Processing, a Modeler's Perspective, Part 13**
Miscellaneous mill equipment.
by John Hitzeman
- 47** **Deadwood Central 3-Foot Gauge Trolley Car**
A rare breed.
by Albin Lee and Scott Zieske
- 54** **Lawndale Railway & Industrial Company Gondola**
Something different.
by Lee Rainey
- 56** **The Narrow Gauge Scene**
A short history of the Slim Gauge Guild.
by Charlie Getz
- 60** **Up Clear Creek on the Narrow Gauge, Part 38**
The old Missouri firehouse.
by Harry Brunk
- 64** **Sawmill Chronicles, Part 12**
The Log Turner.
by Reg Shaffer
- 72** **The Model Makers Notebook**
More cabin cars for your logging show.
by Al Armitage
- 80** **Extra Narrow Gauge Junction**
Two-foot goslings.
by Dick Andrews

COVER

Many narrow gaugers are fond of the Rio Grande Southern's Work Goose #6. You can see the prototype at the Colorado Railroad Museum in Golden, Colorado. You can even own your very own Work Goose by building one of the new Grandt Line On3 kits. Either way, I know you will enjoy Dale Fleming's clever painting showing her from all sides at once.

PLANS

- 26-27** **Tionesta Valley Cabooses**
#107, #109, #110
by Edmund Collins III
- 28** **Tionesta Valley Caboose #111**
by Ed Cass
- 31-32** **Virginia & Truckee Carson City Enginehouse Details**
by Gary Caviglia
- 49** **Deadwood Central 3-Foot Gauge Trolley Car**
by Albin Lee
- 50-53** **West Side Lumber Co. Shay #15**
by Al Armitage
- 55** **Lawndale Railway & Industrial Co. Gondola**
by Lee Rainey
- 62** **Old Missouri Firehouse**
by Harry Brunk
- 69** **D&RG Boxcar #4500**
by Herman Darr
- 70-71** **Porter 0-6-0**
by Ed Gebhardt
- 74-75** **Logging Cabin Cars**
by Al Armitage

DEPARTMENTS

- 5** **Robert's Ramblings**
- 12** **New in Review**
- 15** **In Brief**
- 84** **Gallery**
- 89** **Book and Record Reviews**
- 95** **Riptrack**