

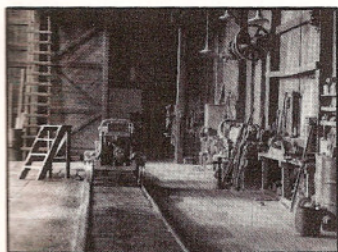
# NARROW GAUGE AND SHORT LINE GAZETTE

*Accurate Information for Fine Modelbuilding - May/June 1988 \$3.25*





# NARROW GAUGE AND SHORT LINE GAZETTE



MAY/JUNE 1988

VOLUME 14, NUMBER 2

## SPECIAL FEATURE

- 22 **The Doane Valley Lumber Company Engine House**  
GAZETTE Award, Pasadena.  
by Charles C. Doan

## FEATURES

- 17 **A Kirkfield Crushed Stone Company Update**  
A reader writes.  
by E. B. Freeman
- 28 **My On2 Roundhouse**  
No compromises.  
by Bob Brown
- 35 **The Backwoods Line of the HO Scale Franklin & South Manchester Railroad**  
Rural counterpoint.  
by George Selios
- 42 **Reliable Carter Brothers Flatcars in HO<sub>N</sub>3**  
Getting them running.  
by Jim Vail
- 46 **A Smelting Campaign, Part 7**  
The reverb furnace.  
by Lind Wickersham
- 52 **A Kit-bashed Rotary Snowplow**  
Yep!  
by Bob Boudreau
- 54 **The Hull Oakes Lumber Company**  
Steam in the 1980s.  
by Harry Bonham
- 60 **My HO Scale Crown Point & Virginia Mine**  
It's a classic.  
by Dwayne Easterling
- 65 **The Ambledown Valley**  
Build 'em cheap and build 'em quick.  
by David Pinniger
- 71 **Up Clear Creek on the Narrow Gauge, Part 50**  
The Silver Plume Clock Tower.  
by Harry Brunk
- 78 **The Narrow Gauge Scene**  
Passenger cars of the Rio Grande, Part 2.  
by Charlie Getz
- 80 **Extra Narrow Gauge Junction**  
Crossings, rail, and locomotive weight.  
by Dick Andrews

## PLANS

- 17 **Kirkfield Crushed Stone Vulcan #4104**  
by Barry McClelland
- 18 **The Dolores Depot**  
by Mike Blazek
- 31 **Yosemite Short Line Proposed Flatcar**  
by Gary Caviglia
- 32 **Hetch Hetchy Railroad Motor Car #24**  
by Gary Caviglia
- 39 **KILAUEA-IKI - a 7-Ton Baldwin Switcher**  
by Stuart Baker
- 50-51 **Sandy River & Rangeley Lakes #21**  
by Ed Gebhardt
- 70 **Denver & Rio Grande Western Cresco, Colorado, Telephone Booth**  
by Dave Adams
- 73 **The Silver Plume Clock Tower**  
by Harry Brunk

## DEPARTMENTS

- 5 **Robert's Ramblings**
- 12 **New In Review**
- 16 **In Brief**
- 84 **Gazette Gallery**
- 89 **Book and Video Reviews**
- 96 **Riptrack**

## COVER

The brightness of the Colorado aspens contrasts with the run-down look of Rio Grande Southern Goose #3. This month's cover was painted by Malcolm Furlow, and shows that he is not only a fine model builder but a fine artist.