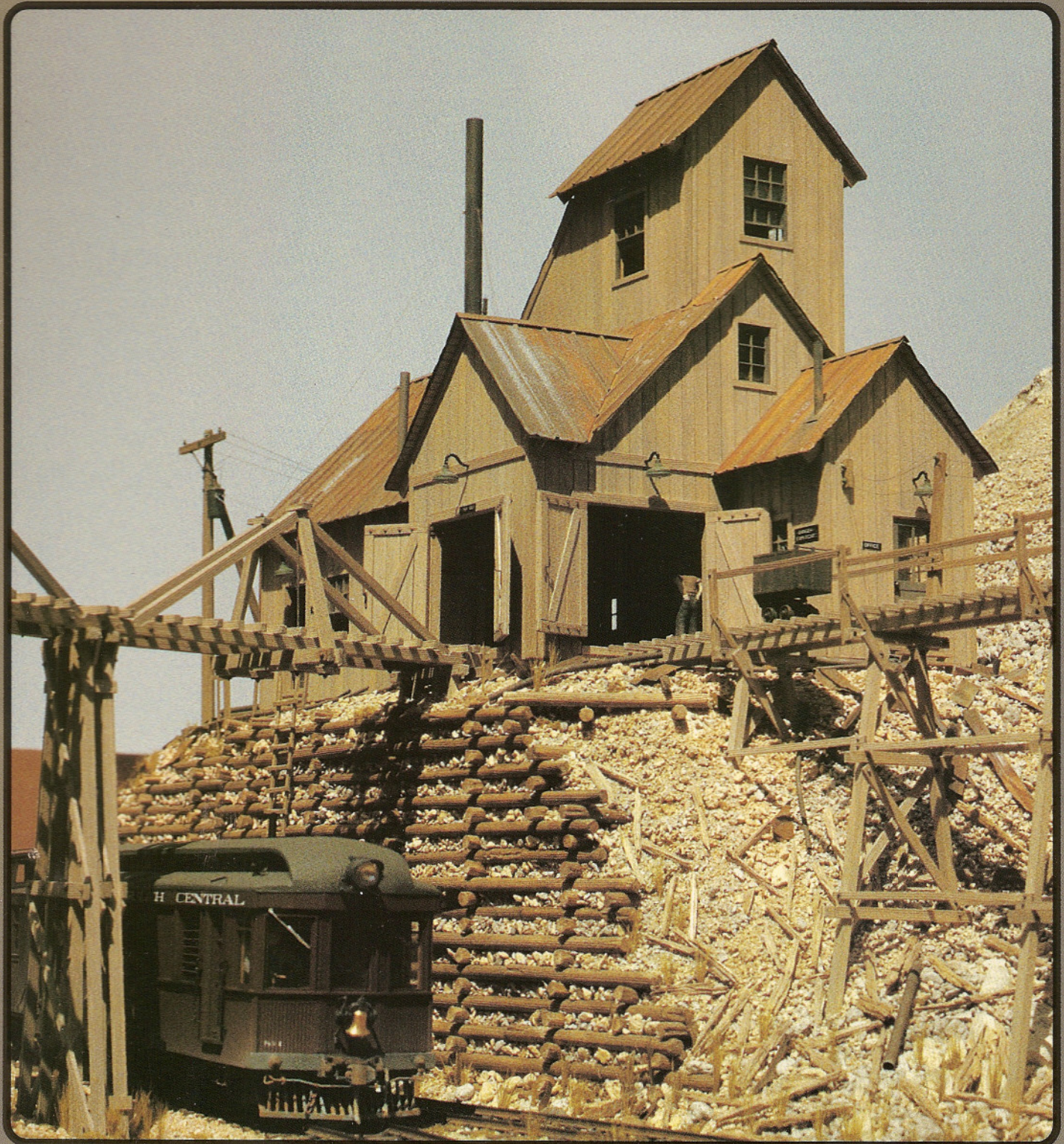
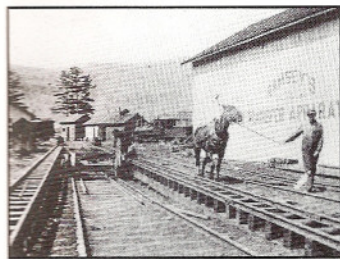


NARROW GAUGE AND SHORT LINE GAZETTE

Accurate Information for Fine Modelbuilding ~ Mar/Apr 1998 \$4.25



NARROW GAUGE AND SHORT LINE GAZETTE



MARCH/APRIL 1998

VOLUME 24, NUMBER 1

SPECIAL FEATURE

- 40 **Building an HO/HOn3 Ramsey Transfer**
Wide to narrow.
by George Pierson

FEATURES

- 20 **Building the Rico Depot in 1/2-Inch Scale**
Wow: 17,625 shingles.
by Al Krol
- 26 **Up Rattlesnake Hill, Part 1**
Foundation and Hoist House
by John Campbell
- 35 **The HOn30 Medford & Crater Lake Railroad**
Add on.
by David Lunt
- 45 **An O Scale Railroad Machine Shop**
Machine tool showcase.
by Mark Hankins
- 48 **Extra Narrow Gauge Junction**
Final Meet at the Junction
by Dick Andrews
- 54 **The Model Makers Notebook**
A 3-foot Gauge 2-6-0 Glover Machine Works #81418
by Al Armitage
- 58 **The Narrow Gauge Scene**
Cimarron, Montrose, and Beyond
by Charlie Getz
- 64 **My Two Railroads: The HOn3 Glenwood & Black Creek and the HO Central California Coast**
Specialized Electrical Circuits
by Jim Vail, MMR
- 70 **A Denver & Rio Grande Western K-37 Album**
All in a bunch.
by Mallory Hope Ferrell
- 76 **Up Clear Creek on the Narrow Gauge, Part 107**
A Layout on Wheels
by Harry Brunk
- 81 **Building an Empire**
Soldering Locos
by Lane Stewart
- 84 **Route to the Redwoods: The HOn3 North Pacific Coast Narrow Gauge and Its Subsidiary, The Buckhorn Logging Co., Part 7**
Shaping a World
by Boone Morrison
- 88 **Working Marker Lamps for RGS Caboose #0400**
Sneaky.
by Bill Busacca
- 91 **Mystery Models: A Large Scale Locomotive and Two Dump Cars**
Can you help?
by Bob Brown

PLANS

- 28 **The Rattlesnake Mine Hoist House**
by John Campbell
- 31 **Eagles Mere Railroad: Williamsport & North Branch Combine #10**
by Edmund Collins III
- 52 **A 30-inch Gauge Vulcan Diesel Locomotive**
by Ed Gebhardt
- 54 **A 3-foot Gauge 2-6-0 Glover Machine Works #81418**
by Al Armitage
- 61 **The Yosemite Valley Railroad's Merced, California, Water Tank**
by Jack Burgess
- 79 **Ohio River & Western Railroad Mail/Baggage/Express Car #25**
by Edward H. Cass
- 92 **Sierra Railway Company Engine #32**
by Gary Caviglia

DEPARTMENTS

- 5 **Robert's Ramblings**
- 6 **Pigeon Hole**
- 12 **New in Review**
- 16 **In Brief**
- 96 **Book and Magazine Reviews**
- 104 **Riptrack**

COVER

John Campbell's O scale Rattlesnake Mine (see page 26) looms over his On3 Chicago Gulch Central rail car. John's rail car won Best of Show at the 1997 Rocky Mountain Region NMRA Convention.



This magazine is printed on recycled paper with a minimum of 10 percent post-consumer content.

The NARROW GAUGE AND SHORT LINE GAZETTE (ISSN 01 48-2122) is published bi-monthly in March, May, July, September, November, and January by Benchmark Publications, Ltd., 4966 El Camino Real, #101, Los Altos, CA 94022. Subscription Rates: (United States) Periodicals mail - \$24.00 per year. Foreign Rates (including Canada), Surface - \$34.00 per year, (U.S. funds please). Periodicals Postage paid at Los Altos, CA 94022 and at additional entry offices. Postmaster send address changes to **Narrow Gauge and Short Line Gazette**, 4966 El Camino Real, #101, Los Altos, CA 94022. The contents of this magazine must not be reprinted without permission of the publisher. THE NARROW GAUGE AND SHORT LINE GAZETTE incorporates **Finelines** and **The Slim Gauge News**. Printed in U.S.A. Copyright 1998 Benchmark Publications, Ltd. All rights reserved.