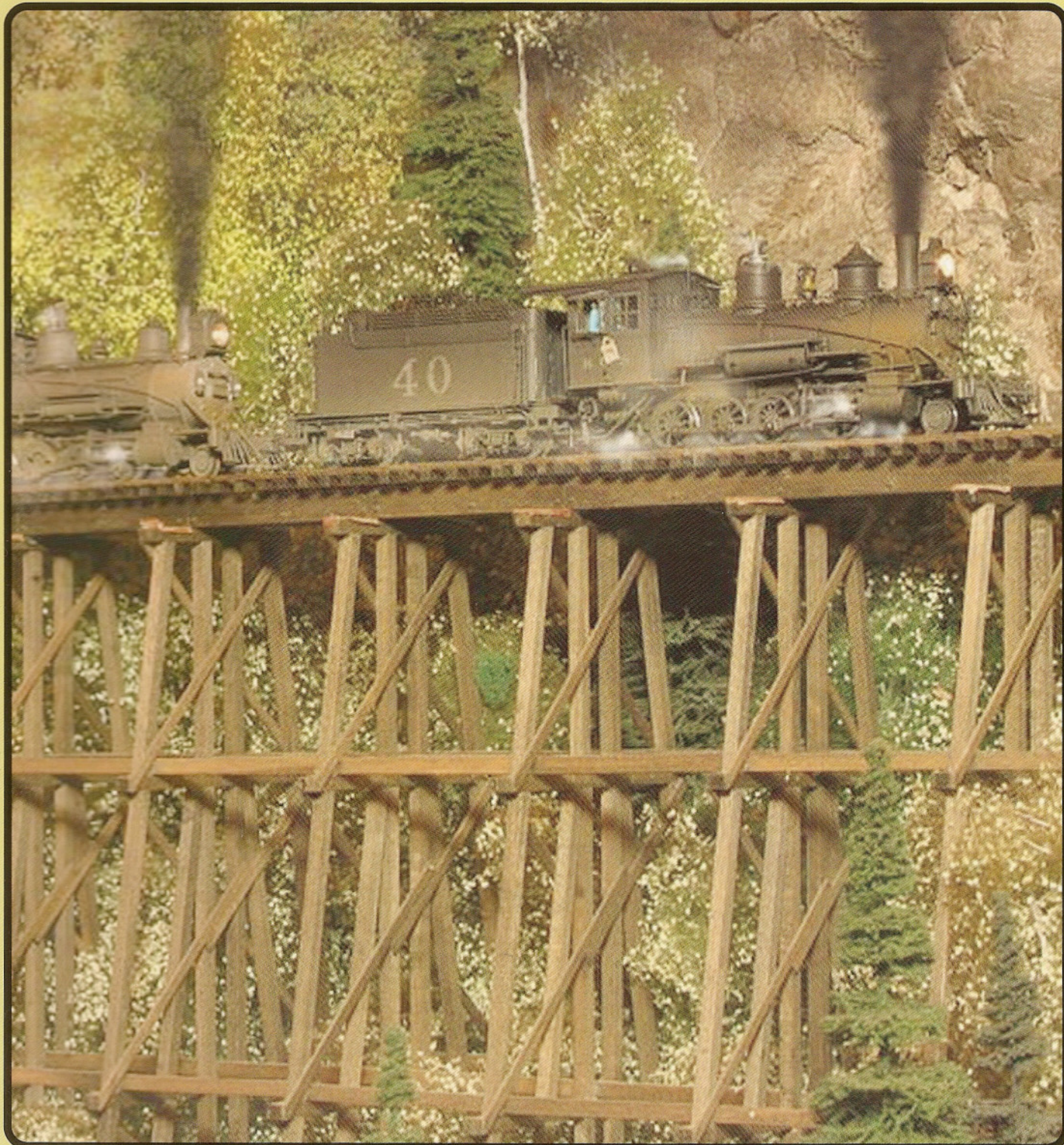


# NARROW GAUGE AND SHORT LINE GAZETTE

*Accurate Information for Fine Modelbuilding – May/June 2004*

*\$4.95 United States – \$6.95 Canada – \$5.95 other countries*

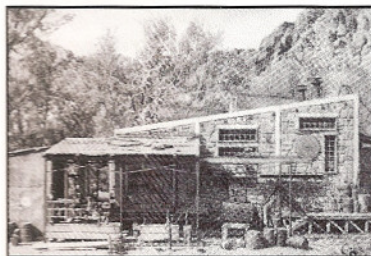




# NARROW GAUGE AND SHORT LINE GAZETTE

MAY/JUNE 2004

VOLUME 30, NUMBER 2



## SPECIAL FEATURE

- 24 Building a Two-Stall Engine House for My On3 Sawtooth Timber Co.**  
Prize winner.  
by Brian Block

## FEATURES

- 19 Scratch-Building M.A.C. Model 4-40 "Gas Rail Cars" in O Scale**  
A Darius Kinsey tribute.  
by Fran Foley
- 30 Along the Narrow Gauge**  
Saga of the C-16, Part 1 – An Overview  
by Mallory Hope Ferrell
- 39 Larry Caniff's On30 Shelly's Creek & Western Railroad**  
"Bachmann land."  
by Greg Condio
- 44 My Rundown & Poor Lumber Co.**  
A 1:20 Scale Indoor Railroad  
by Ronnie Davis
- 52 Route to the Redwoods: The On3 North Pacific Coast Railroad and Its Subsidiary, The Buckhorn Logging Co. Part 44:**  
Planning My New Layout  
by Boone Morrison
- 59 Incline Tank Cars of the Yosemite Lumber Company**  
Unique.  
by Jack Burgess, MMR
- 62 A Moving Experience at Forks Creek**  
Part 1-The Forks Depot Complex  
by Harry Brunk
- 66 The Incentive of a Layout Visit**  
Getting ready.  
by Jim Vail, MMR
- 82 Building an Empire**  
The Invisible Mine – Modeling the Model to a T – More "Mining Mines"  
by Lane Stewart
- 87 The Narrow Gauge Scene**  
My Narrow Gauge "Odyssey", Part 3: Planning My Dream Layout  
by Charlie Getz

## PLANS

- 21 M.A.C. Model 4-40 "Gas Rail Car"**  
Traced by Bill Roy
- 32-33 D&RG 2-8-0 #42 ANGLO SAXON**  
by D&RG's Denver Shop Draftsman, 1880
- 37 A Barrel Car**  
by Tim Stolle
- 48 Denver & Rio Grande, 2-8-0, ALAMOSA**  
by Gary Caviglia
- 49 Sierra Nevada Wood & Lumber Co. #4**  
by Gary Caviglia
- 61 Yosemite Lumber Co. Incline Tank Car**  
by Jack Burgess, MMR
- 71 Cherokee Lumber Co. #2, MILDRED, A 3-foot Gauge Vulcan 0-4-4T**  
by Edward H. Cass
- 76-77 A Pacific Coast Lighthouse**  
by Robert D. Bailey
- 90-91 D&RGW Water Car #06217**  
by Werner A. Kampfen

## DEPARTMENTS

- 5 Robert's Ramblings**
- 9 The Pigeon Hole**
- 11 In Brief**
- 12 New in Review**
- 93 Gallery**  
24th NNG Convention Layouts
- 98 Book and Video Reviews**
- 105 Riptrack**

## COVER

A double-header led by #40 "storms" across the High Line on Jim Vail's HO/HOn3 Glenwood & Black Creek Railroad. Jim's layout will be one of over 40 on the layout tours at the 24th National Narrow Gauge Convention to be held September 1-4, 2004, in Santa Clara, California. Photo by Jim Vail.



This magazine is printed on recycled paper with a minimum of 10 percent post-consumer content.

The NARROW GAUGE AND SHORT LINE GAZETTE (ISSN 01 48-2122) is published bi-monthly in March, May, July, September, November, and January by Benchmark Publications, Ltd., 800 West El Camino Real, Suite 180, Mountain View, CA 94040. Subscription Rates: (United States) Periodicals mail - \$28.00 per year. Foreign Rates (including Canada), Surface - \$38.00 per year, (U.S. funds please). Periodicals Postage paid at Los Altos, CA 94022 and at additional entry offices. Postmaster send address changes to **Narrow Gauge and Short Line Gazette**, 800 West El Camino Real, Suite 180, Mountain View, CA 94040. The contents of this magazine must not be reprinted without permission of the publisher. THE NARROW GAUGE AND SHORT LINE GAZETTE incorporates **Finelines** and **The Slim Gauge News**. Printed in U.S.A. Copyright 2004 Benchmark Publications, Ltd. All rights reserved. Canadian Post Publications Mail Agreement No. #40065056. Canadian Return Address: DP Global Mail, 4960-2 Walker Road, Windsor, ON N9A 6J3.