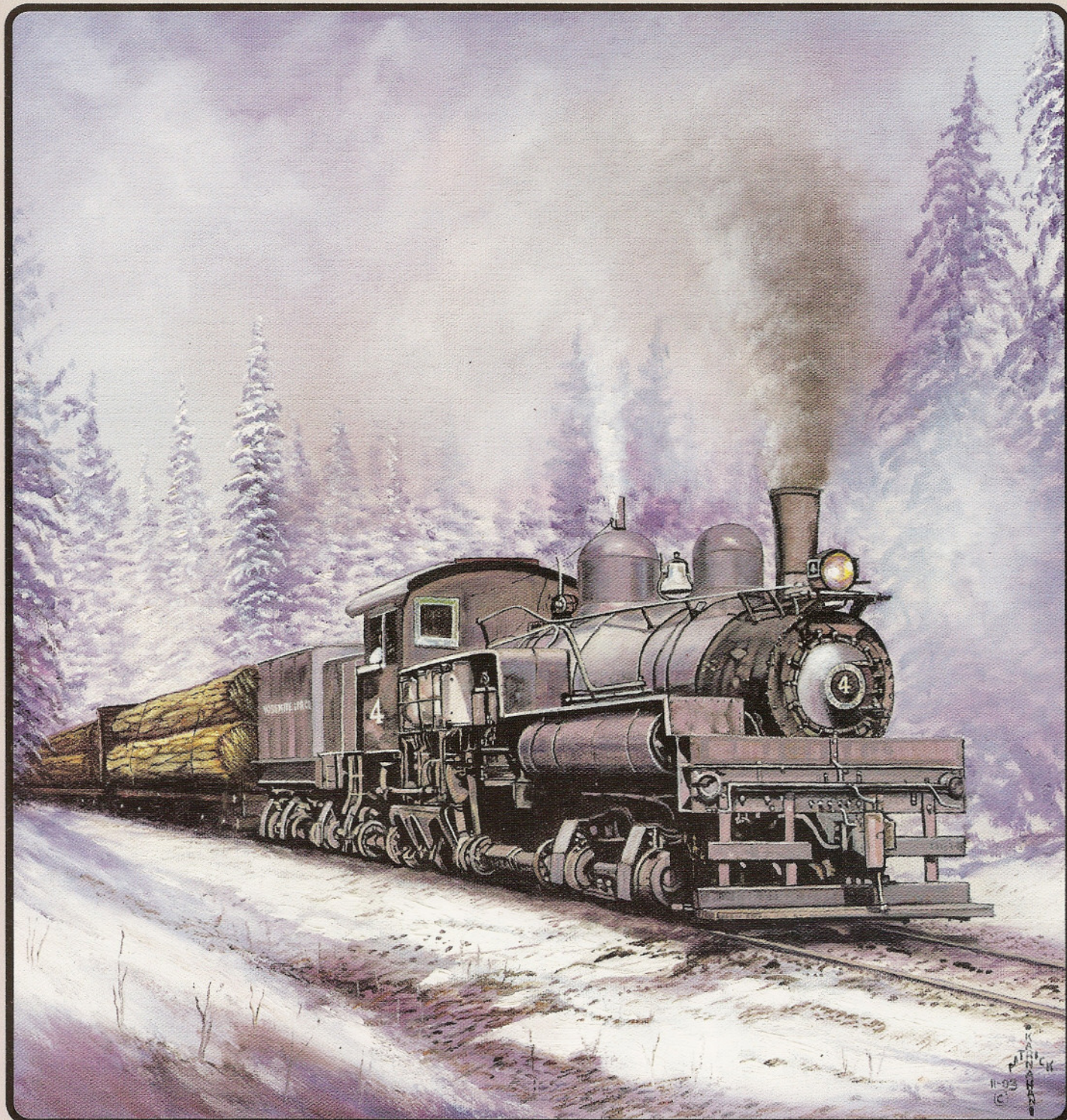


NARROW GAUGE AND SHORT LINE GAZETTE

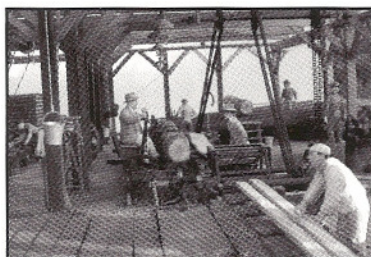
Accurate Information for Fine Modelbuilding – Mar/Apr 2005

\$4.95 United States – \$6.95 Canada – \$5.95 other countries

⇒ THIRTY YEARS OF FINE MODELBUILDING ⇐



NARROW GAUGE AND SHORT LINE GAZETTE



MARCH/APRIL 2005

VOLUME 31, NUMBER 1

SPECIAL FEATURE

- 64 **A 1:24 Scale Animated Sawmill**
Large scale challenge.
by Jack Verducci

FEATURES

- 20 **My On3 Denver & Rio Grande Silverton Branch**
On Tour
by Doug Tagsold
- 26 **My HO Gauge Copper Valley Railway Motor Car**
Love at first sight.
by Jim Zinser
- 30 **Nn3 At the 24th National Narrow Gauge Convention**
"The Alliance"
by Tom Knapp, MMR
- 36 **My 3/8-Inch Scale Logging and Tractor Repair Shed**
Best of Show and Caboose Hobbies Award,
24th National NG Convention
by David Revelia
- 42 **Route to the Redwoods: The On3 North Pacific Coast Railroad and Its Subsidiary, The Buckhorn Logging Co. Part 49:**
The Anatomy of a Wooden Railroad Car
by Boone Morrison
- 49 **Re-Shopping My C&S/UC&N HOn3 Locomotives**
A Tender Subject
by Harry W. Brunk
- 56 **Along the Narrow Gauge**
Saga of the C-16, Part 6 - Class Action
by Mallory Hope Ferrell
- 69 **A Visit to Micro-Trains Line**
Made in America.
by Jim Vail, MMR
- 72 **The Bodie Railway & Lumber Co. Part 3 - Flatcars**
by Dan Kieft
- 80 **The Narrow Gauge Scene**
Thirty Years of Change
by Charlie Getz

PLANS

- 25 **A 1930's Steel Windmill**
by Robert D. Bailey
- 46-47 **California Western Locomotives #11 and #7/17**
by Gary Caviglia
- 50-51 **Colorado & Southern Class B-3-C, 2-6-0's #6 and #9**
by Harry Brunk
- 63 **A Coeur d' Alene Hardware and Foundry Ore Car**
by Tim Stolle
- 73-74 **Bodie Railway & Lumber Co. Flatcars**
by Dan Kieft

DEPARTMENTS

- 5 **Robert's Ramblings**
- 7 **Pigeon Hole**
- 11 **In Brief**
- 12 **New in Review**
- 85 **Gallery**
Models by Bob Brown, Tuolumne Forks Lbr. Co
- 90 **Book Reviews**
- 97 **Riptrack**

COVER

Patrick Karnahan calls his cover painting of Yosemite Lumber Co. Shay #4 hauling logs out of the woods "First Load of the Season." Patrick has re-opened his Rails West Gallery at 136 S. Washington St. in Sonora California. Contact him at 209/533-0577, www.trainfire.com. Patrick sells 16 X 20 color prints of his painting of #4 for \$50.00. All proceeds go toward restoring the prototype.



This magazine is printed on recycled paper with a minimum of 10 percent post-consumer content.

The NARROW GAUGE AND SHORT LINE GAZETTE (ISSN 01 48-2122) is published bi-monthly in March, May, July, September, November, and January by Benchmark Publications, Ltd., 800 West El Camino Real, Suite 180, Mountain View, CA 94040. Subscription Rates: (United States) Periodicals mail - \$28.00 per year. Foreign Rates (including Canada), Surface - \$38.00 per year, (U.S. funds please). Periodicals Postage paid at Los Altos, CA 94022 and at additional entry offices. Postmaster send address changes to **Narrow Gauge and Short Line Gazette**, 800 West El Camino Real, Suite 180, Mountain View, CA 94040. The contents of this magazine must not be reprinted without permission of the publisher. THE NARROW GAUGE AND SHORT LINE GAZETTE incorporates **Finelines** and **The Slim Gauge News**. Printed in U.S.A. Copyright 2005 Benchmark Publications, Ltd. All rights reserved. Canadian Post Publications Mail Agreement No. #40065056. Canadian Return Address: DP Global Mail, 4960-2 Walker Road, Windsor, ON N9A 6J3.