

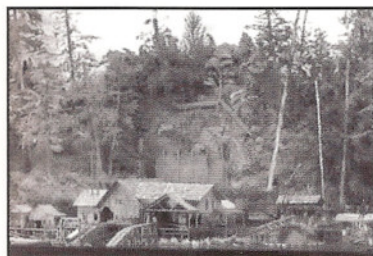
NARROW GAUGE AND SHORT LINE GAZETTE

Accurate Information for Fine Modelbuilding – Sept/Oct 2005

\$5.95 United States – \$7.95 Canada – \$6.95 other countries



NARROW GAUGE AND SHORT LINE GAZETTE



SEPTEMBER/OCTOBER 2005

VOLUME 31, NUMBER 4

SPECIAL FEATURE

- 20 **My Copperhead & Moss Creek Logging Company**
An HOn3 Logging Layout
by Jeff Fincher

FEATURES

- 28 **An Oklahoma Lead Mine**
Something different.
by Henry D. Y. Townsend
- 34 **KALKA SIMLA Railway #12**
A 30-Inch Gauge Motor Car
by Jeff Scherb
- 38 **Building an On3 Rail Bus**
Durango & Silverton Narrow Gauge RB1
by Richard J. Krueger
- 42 **Route to the Redwoods: The On3 North Pacific Coast Railroad and Its Subsidiary, The Buckhorn Logging Co. Part 52:**
The Birth of a Kit
by Boone Morrison
- 48 **Along the Narrow Gauge Thirty-Inch Gauge Railroads**
A Park City Pictorial
by Mallory Hope Ferrell
- 64 **Lynn Austin's On30 Sedona & Pacific**
Built for Frank Burke - and for fun
by Bob Hayden
- 70 **A Farm - For a Change**
Refreshing.
by Paul Scoles, MMR
- 76 **Waterfront at Alviso Slough**
The Buildings and Mirrors
by Jim Vail, MMR
- 81 **The Bodie Railway & Lumber Co. Part 6 -**
The Oldsmobile Rail Car
by Dan Kieft
- 82 **The Narrow Gauge Scene**
Narrow Gauge Conventions - Australian Style
by Charlie Getz
- 85 **Truck Trickery**
A Motor Truck too Good to Miss
by Bob Santos

PLANS

- 54-55 **Argent Lumber Company #7**
by Edward H. Cass
- 57 **An Old Utility Trailer**
by Robert D. Bailey
- 59 **A Jeffrey Self-Contained Storage Battery Locomotive**
by Tim Stolle
- 60 **McCloud River Railroad Engine #12**
by Gary Caviglia
- 61 **Ocean Shore Railroad Engine Nos. 5 and 6**
by Gary Caviglia
- 81 **Bodie Railway & Lumber Co. Oldsmobile Rail Car**
by Dan Kieft
- 88 **McCloud River Railroad President's Private Car No. 100**
by Gary Caviglia
- 89 **McCloud River Railroad Combination No. 02**
by Gary Caviglia

DEPARTMENTS

- 5 **Robert's Ramblings**
- 6 **Pigeon Hole**
- 11 **In Brief**
- 12 **New in Review**
- 93 **Gallery**
Models by A.G. Kann
- 98 **Book Reviews**
- 105 **Riptrack**

COVER

This issue's cover shows 2-foot gauge Wiscasset, Waterville & Farmington #9 drifting into Wiscasset, Maine. Artist David Tutweiler titled his oil painting, *Steam on the Wiscasset Waterfront*. Dave's painting has been slightly cropped to fit the cover. You can see the entire image in the WW&F Railway Museum ad on page 101.



This magazine is printed on recycled paper with a minimum of 10 percent post-consumer content.

The NARROW GAUGE AND SHORT LINE GAZETTE (ISSN 01 48-2122) is published bi-monthly in March, May, July, September, November, and January by Benchmark Publications, Ltd., 800 West El Camino Real, Suite 180, Mountain View, CA 94040. Subscription Rates: (United States) Periodicals mail - \$32.00 per year. Foreign Rates (including Canada) - \$43.00 per year, (U.S. funds please). Periodicals Postage paid at Los Altos, CA 94022 and at additional entry offices. Postmaster send address changes to **Narrow Gauge and Short Line Gazette**, 800 West El Camino Real, Suite 180, Mountain View, CA 94040. The contents of this magazine must not be reprinted without permission of the publisher. THE NARROW GAUGE AND SHORT LINE GAZETTE incorporates **Finelines** and **The Slim Gauge News**. Printed in U.S.A. Copyright 2005 Benchmark Publications, Ltd. All rights reserved. Canadian Post Publications Mail Agreement No. #40065056. Canadian Return Address: DP Global Mail, 4960-2 Walker Road, Windsor, ON N9A 6J3.