

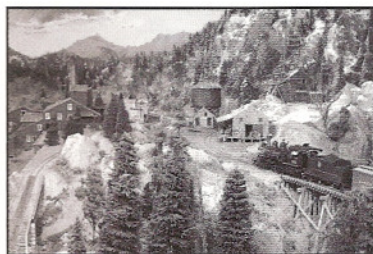
NARROW GAUGE AND SHORT LINE GAZETTE

Accurate Information for Fine Modelbuilding – Jan/Feb 2008

\$5.95 United States – \$8.25 Canada – \$7.50 other countries



NARROW GAUGE AND SHORT LINE GAZETTE



JANUARY/FEBRUARY 2008

VOLUME 33, NUMBER 6

SPECIAL FEATURE

- 48 **My Rio Grande Southern in HO_N3**
From Ridgway to Durango
by Richard Dorman

FEATURES

- 21 **My HO Scale Wilmot Table Company Diorama**
GAZETTE Award.
by Robert L. Lawson
- 29 **My On30 "Harris" Inspection Car**
Cobbled up.
by Allen Littlefield
- 32 **The American Magnesium Company Monorail**
Part 1: History, Track, and Operations
by Adrian S. Garner
- 38 **My Sn3 Denver, South Park & Southern -
"Ten Pounds in a Five-Pound Sack"**
An Sn3 squeeze.
by Joe Brooke
- 44 **The Ash Pit at Silver Plume**
A mystery shed.
by Harry Brunk
- 56 **Detailing Blackstone Models' HO_N3 K-27's**
Tips
by Craig Symington
- 62 **Route to the Redwoods: The On3 North Pacific
Coast Railroad and Its Subsidiary, The Buckhorn
Logging Co., Part 66:**
It's in the Detail
by Boone Morrison
- 69 **The "Outskirts" Of Black Creek City**
Using Severe Compression To Build A Scene
By Jim Vail, MMR
- 79 **Denver & Rio Grande Western #315 Steams Again**
Magnificent.
by Bob Hayden
- 80 **Along the Narrow Gauge**
Thirty-Inch Gauge Railroads
Montana Lines: Part 2 - The Alder Gulch Shortline
By Mallory Hope Ferrell
- 86 **The Narrow Gauge Scene**
Roadside Americana Part 4: Get Your Grub on Route 66
By Charlie Getz

PLANS

- 26-27 **Aunt Mae's House**
by Robert D. Bailey
- 36 **American Magnesium Company
Monorail Track**
by Adrian S. Garner
- 46 **Coal Bunker**
by Harry Brunk
- 55 **Monson Railroad 2-foot Gauge Snowplow**
by Wesley Ewell
- 67 **Pajaro Valley Consolidated RR Nos. 1 & 2**
by Gary Caviglia
- 74-75 **Pittsburgh, Johnstown, Ebensburg & Eastern
(Altoona Northern) #5 -
A 3-foot Gauge 2-6-0**
by Edward H. Cass

DEPARTMENTS

- 5 **Robert's Ramblings**
- 12 **In Brief**
- 13 **New in Review**
- 90 **Book Reviews**
- 97 **Riptrack**

COVER

This issue's cover photo shows a freight train leaving Dolores on Richard Dorman's HO_N3 Rio Grande Southern layout. See Richard's article starting on page 48. Photo by Bob Hayden.



This magazine is printed on recycled paper with a minimum of 10 percent post-consumer content.

The NARROW GAUGE AND SHORT LINE GAZETTE (ISSN 01 48-2122) is published bi-monthly in March, May, July, September, November, and January by Benchmark Publications, Ltd., 800 West El Camino Real, Suite 180, Mountain View, CA 94040. Subscription Rates: (United States) Periodicals mail - \$32.00 per year. Foreign Rates (including Canada) - \$45.00 per year, (U.S. funds please). Periodicals Postage paid at Los Altos, CA 94022 and at additional entry offices. Postmaster send address changes to **Narrow Gauge and Short Line Gazette**, 800 West El Camino Real, Suite 180, Mountain View, CA 94040. The contents of this magazine must not be reprinted without permission of the publisher. **THE NARROW GAUGE AND SHORT LINE GAZETTE** incorporates **Finelines** and **The Slim Gauge News**. Printed in U.S.A. Copyright 2008 **Benchmark Publications, Ltd.** All rights reserved. Canadian Post Publications Mail Agreement No. #40065056. Canadian Return Address: DP Global Mail, 4960-2 Walker Road, Windsor, ON N9A 6J3.