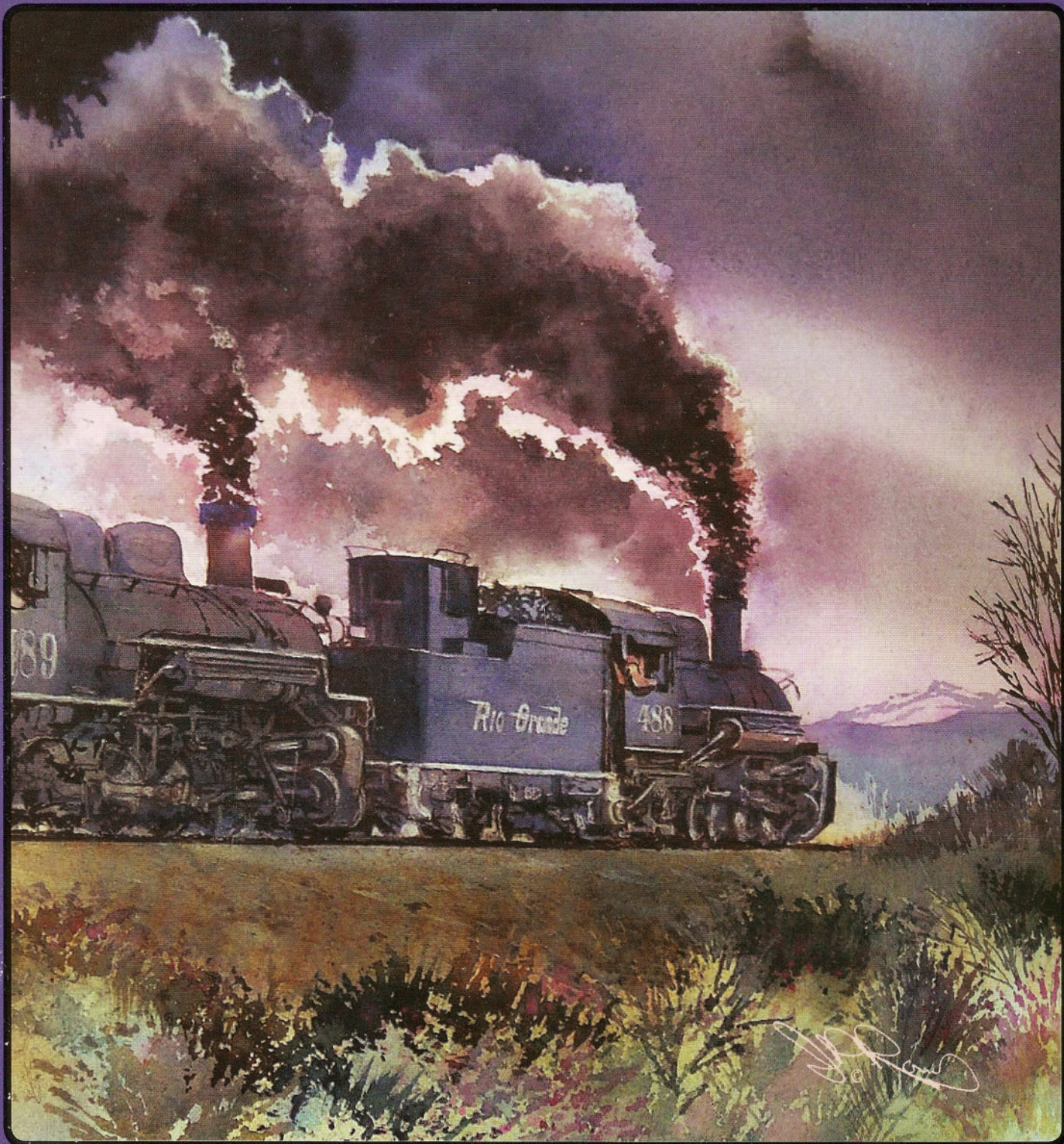


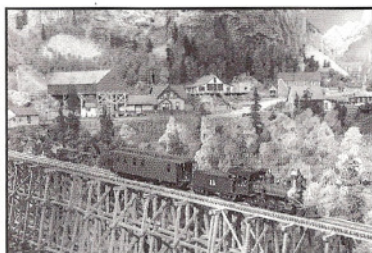
NARROW GAUGE AND SHORT LINE GAZETTE

Accurate Information for Fine Modelbuilding – Nov/Dec 2008

\$5.95 United States — \$7.25 Canada



NARROW GAUGE AND SHORT LINE GAZETTE



NOVEMBER/DECEMBER 2008

VOLUME 34, NUMBER 5

SPECIAL FEATURE

20 My On3 Rio Grande Southern Ophir District

All the trestles – and the Arnes Cliffs.

by Dennis Ferguson

FEATURES

- 28 **O Scale Adobe Buildings From Balsawood**
A Blacksmith Shop
by Jim Gore
- 32 **Alvard's Landing**
Installing the Turntable and Its Pit
by Robert D. Bailey
- 36 **My Windy River Timber Co. Engine House**
An On30 Prize Winner
GAZETTE Award
by Jerry L. Martin
- 39 **Mack Trucks**
Two F-Series Oldies in 1:20.3 Scale
by George Konrad, MMR
- 44 **Denver & Rio Grande Western Spreader OU**
Four versions in HOOn3.
by Eric Bracher, MMR
- 51 **The Leighton Buzzard Light Railway**
A History
by Jeff Scherb
- 62 **Along the Narrow Gauge**
Thirty-Inch Gauge Railroads – The Final Chapter
Something Old and Something New
by Mallory Hope Ferrell
- 69 **The Stiff Leg Derrick at Incline**
Another Look
by Jack Burgess, MMR
- 72 **Re-Working the Brickwork at Georgetown**
In Search of Accuracy
by Harry Brunk
- 76 **Route to the Redwoods: The On3 North Pacific Coast Railroad and Its Subsidiary, The Buckhorn Logging Co., Part 71**
Dolbeer Donkeys – Steam Power in the Woods
by Boone Morrison
- 85 **Richard "Dick" Truesdale and His Westside Model Company**
Close friend.
by Jim Vail, MMR
- 89 **The Narrow Gauge Scene**
Old Kits Never Die
by Charlie Getz

PLANS

- 26 **A Standard Gauge Baldwin Locomotive Works Geared Locomotive**
by Terence F. Harper
- 33 **Alvard's Landing Turntable**
by Robert D. Bailey
- 47 **3-Foot Gauge Huckleberry Railroad #11**
by Edward H. Cass
- 53 **Hudson Side Tipping Wagon**
by Jeff Scherb
- 54-55 **Motor Rail Simplex Internal Combustion Locomotives**
by Jeff Scherb
- 58-59 **North Pacific Coast Railroad 4-4-0**
by Gary Caviglia
- 66 **Fort Wilderness Railroad #1**
Courtesy MAPO, Inc.
- 82 **Sinclair Gas Station, Elberta, Utah**
by John S. Midgley

DEPARTMENTS

- 5 **Robert's Ramblings**
- 7 **Pigeon Hole**
- 12 **In Brief**
- 13 **New in Review**
- 93 **Gallery – 28th National Narrow Gauge Contest Winners**
- 98 **Book & DVD Reviews**
- 105 **Riptrack**

COVER

Jan Ron's painting "Silver Cloud" depicts a pair of Rio Grande K-36's rolling across the high desert of Southwestern Colorado in a swirl of steam and smoke. Jan is taking a limited number of commissions at this time. Contact him at 3456 East Cambridge, Phoenix, AZ 85008 or visit www.ronsart.com. See Jan's ad on page 60.



This magazine is printed on recycled paper with a minimum of 10 percent post-consumer content.

The NARROW GAUGE AND SHORT LINE GAZETTE (ISSN 01 48-2122) is published bi-monthly in March, May, July, September, November, and January by Benchmark Publications, Ltd., 800 West El Camino Real, Suite 180, Mountain View, CA 94040. Subscription Rates: (United States) Periodicals mail - \$36.00 per year. Canada - \$45.00 per year. Overseas - \$50.00 per year. U.S. funds please. Periodicals Postage paid at Los Altos, CA 94022 and at additional entry offices. Postmaster send address changes to **Narrow Gauge and Short Line Gazette**, 800 West El Camino Real, Suite 180, Mountain View, CA 94040. The contents of this magazine must not be reprinted without permission of the publisher. **THE NARROW GAUGE AND SHORT LINE GAZETTE** incorporates **Finelines** and **The Slim Gauge News**. Printed in U.S.A. Copyright 2008 **Benchmark Publications, Ltd.** All rights reserved. Canadian Post Publications Mail Agreement No. #40065056. Canadian Return Address: DP Global Mail, 4960-2 Walker Road, Windsor, ON N9A 6J3.