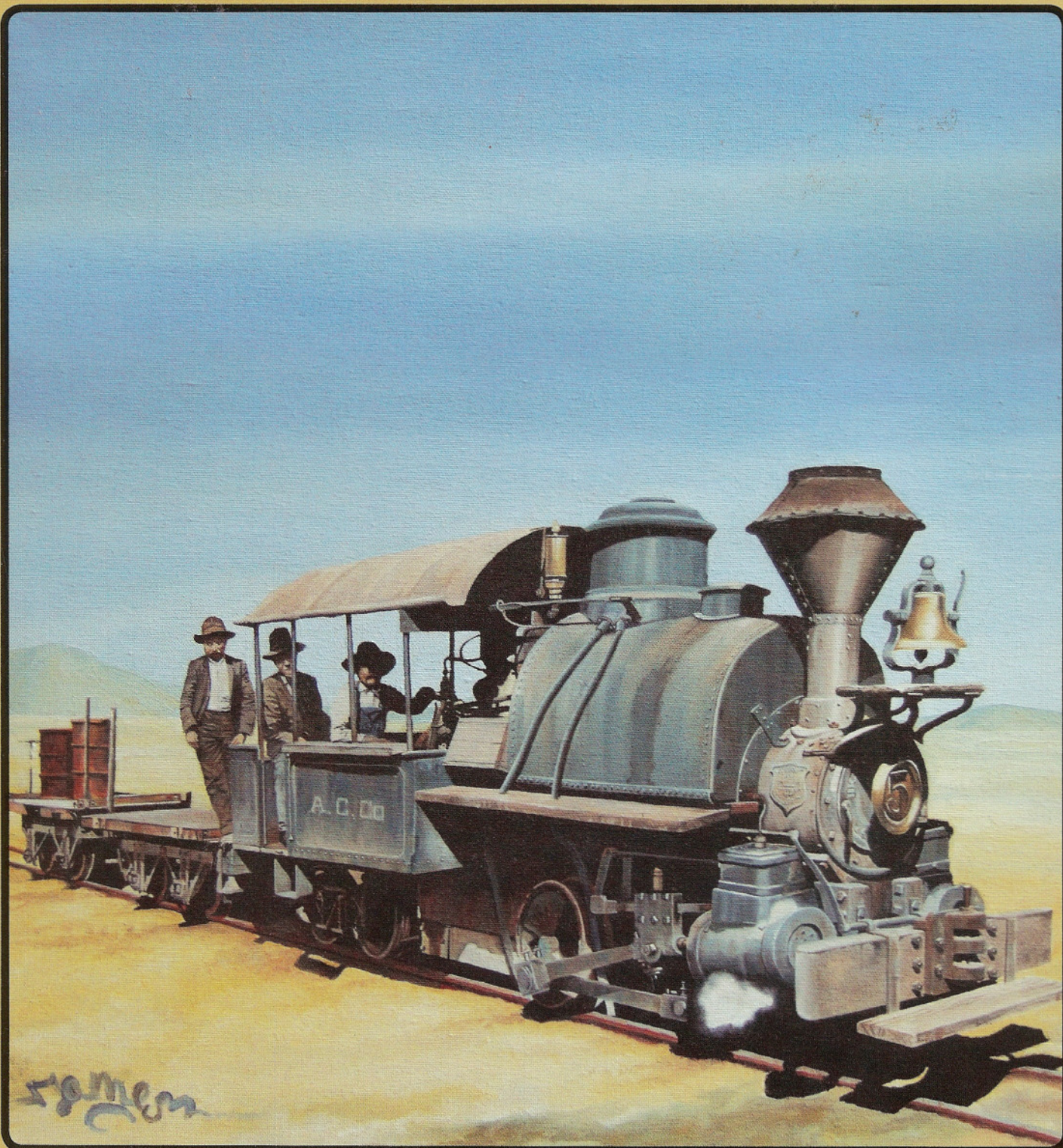


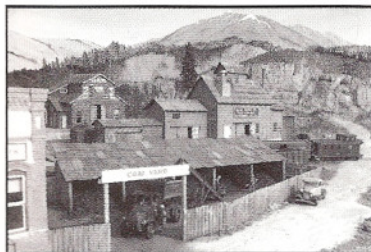
NARROW GAUGE AND SHORT LINE GAZETTE

Accurate Information for Fine Modelbuilding – July/Aug 2009

\$6.95 United States — \$8.25 Canada



NARROW GAUGE AND SHORT LINE GAZETTE



JULY/AUGUST 2009

VOLUME 35, NUMBER 3

SPECIAL FEATURE

- 24 My HO_{N3} Silver Creek Branch of the Denver & Rio Grande Western Railroad**
Great fun.
by Mike Messick

FEATURES

- 19 My O Scale Sawtooth Timber Co.**
A Logging Diorama
by Brian Block, MMR
- 30 My 1:20.3 Scale Surry Parker Log Loader**
A most enjoyable modeling project.
by Frank Palmer
- 38 Models by Lyle Spears**
Inspiration.
by Bob Brown
- 46 A McCormick-Deering Portable Loader**
GAZETTE Inspiration-with a Zip Tie Connection
By Harry W. Brunk
- 53 Route to the Redwoods: The On3 North Pacific Coast Railroad and Its Subsidiary, The Buckhorn Logging Co., Part 75**
Four Early West Coast Photographers
by Boone Morrison
- 58 Along the Narrow Gauge**
The SHAVANO and the SAN JUAN
Three-foot Gauge Luxury
Part 4: Other Equipment and Last Runs
by Mallory Hope Ferrell
- 64 Building and Using a Simple Vacuum Former**
All for some windows.
by Robert D. Bailey
- 68 The Welsh Highland Railway**
Home of the World's Largest 2-Foot Gauge Locomotives
by Jeff Scherb
- 72 The Welsh Highland Railway's Beyer Garratts**
by Jeff Scherb
- 74 Moguls à Trois**
Three On30 Bachmann Mogul conversions.
by Scott Maze
- 80 The Ninth Australian Narrow Gauge Convention**
Wow! - Beautiful Country - Great People - Super Modeling
by Jim Vail, MMR
- 84 The Narrow Gauge Scene**
Colorado Travel Log Redux
by Charlie Getz

PLANS

- 23 Bradford, Bordell & Kinzua Ry. Flatcar**
A Heritage Plan
by Jack Alexander
- 31 Surry Parker Log Loader**
by Thomas A. Yorke
- 41 Rayonier Camp Cars**
A Heritage Plan
by Lyle Spears
- 43 Hoosac Tunnel & Wilmington R.R.**
by Edward H. Cass
- 46 Portable Elevator**
by Chuck Yungkurth
- 50-51 Virginia & Truckee, Truckee River,**
Howe Truss Bridge
by Gary Caviglia

DEPARTMENTS

- 5 Robert's Ramblings**
- 6 Pigeon Hole**
- 10 In Brief**
- 11 New in Review**
- 90 Book and DVD Reviews**
- 97 Riptrack**

COVER

James Coldicott painted the original of this issue's cover. The painting is titled, "Foreman on the Move" and depicts an Arizona Copper Company 20-inch gauge Porter on the Coronado Railroad. James sells limited edition, signed prints of this painting and others. Contact him at www.james-art.com.



This magazine is printed on recycled paper with a minimum of 10 percent post-consumer content.

The NARROW GAUGE AND SHORT LINE GAZETTE (ISSN 01 48-2122) is published bi-monthly in March, May, July, September, November, and January by Benchmark Publications, Ltd., 800 West El Camino Real, Suite 180, Mountain View, CA 94040. Subscription Rates: (United States) Periodicals mail - \$36.00 per year. Canada - \$45.00 per year. Overseas - \$50.00 per year. U.S. funds please. Periodicals Postage paid at Los Altos, CA 94022 and at additional entry offices. Postmaster send address changes to **Narrow Gauge and Short Line Gazette**, 800 West El Camino Real, Suite 180, Mountain View, CA 94040. The contents of this magazine must not be reprinted without permission of the publisher. **THE NARROW GAUGE AND SHORT LINE GAZETTE** incorporates **Finelines** and **The Slim Gauge News**. Printed in U.S.A. Copyright 2009 **Benchmark Publications, Ltd.** All rights reserved. Canadian Post Publications Mail Agreement No. #40065056. Canadian Return Address: DP Global Mail, 4960-2 Walker Road, Windsor, ON N9A 6J3.