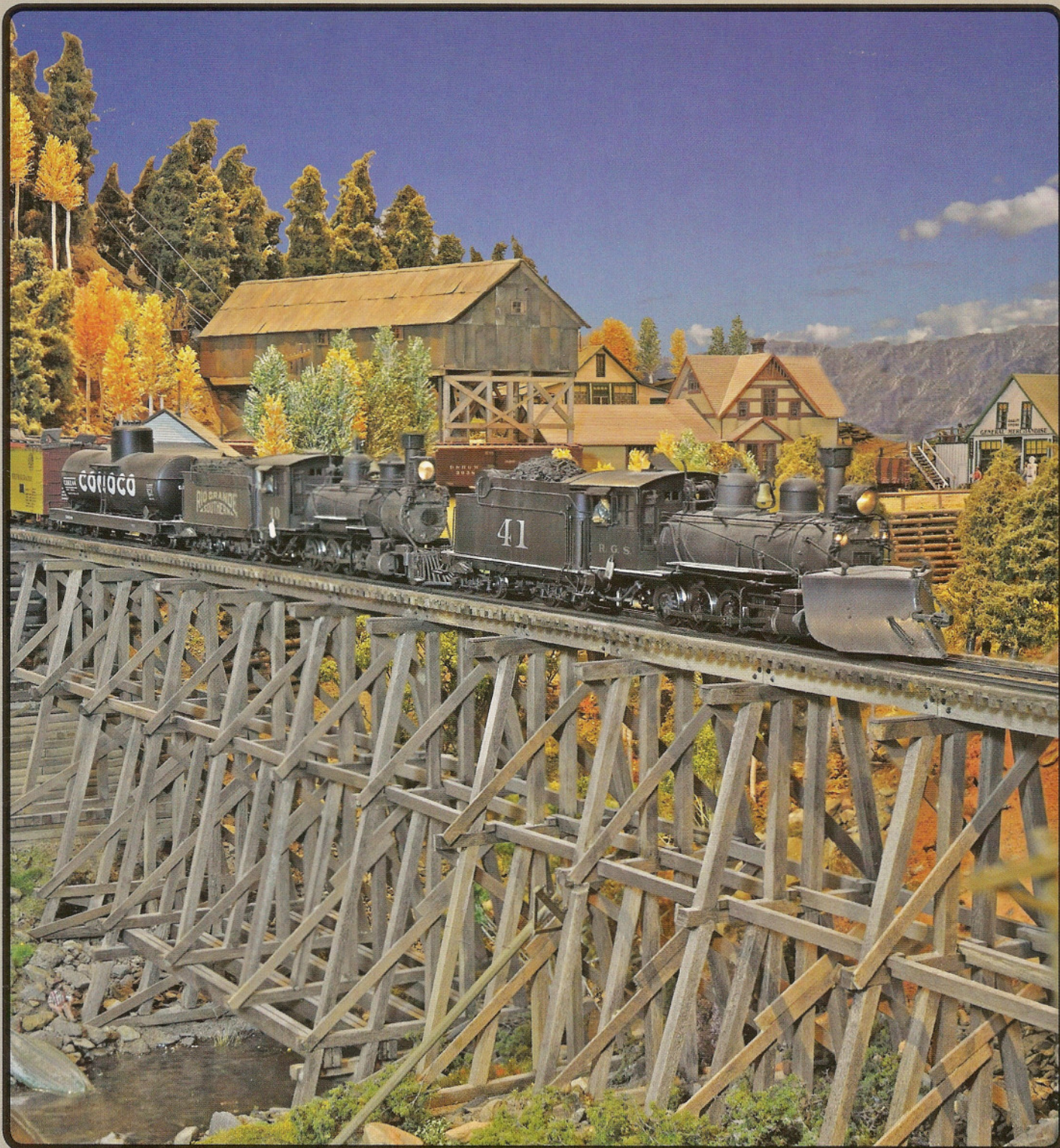


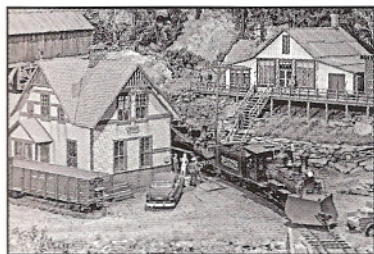
NARROW GAUGE AND SHORT LINE GAZETTE

Accurate Information for Fine Modelbuilding – Mar/Apr 2010

\$6.95 United States — \$8.25 Canada



NARROW GAUGE AND SHORT LINE GAZETTE



MARCH/APRIL 2010

VOLUME 36, NUMBER 1

SPECIAL FEATURE

- 20 **The Sn3 "Silver Sam Juan"**
A Group Effort
by Sam Furukawa

FEATURES

- 26 **The Silver Bell**
"Painting" with Pastel Chalk Pencils
by Steve Harris
- 30 **An On30 Fire Fighting Rail Truck**
Not, "out of the box."
by Gerry Gilliland
- 32 **Carroll Weis**
Pioneer Scratch-BUILDER
by Steve Schweighofer
- 39 **The El Portal Turntable Revised**
The Best We Could Do
by Jack Burgess, MMR
- 46 **A "Bobbed" On30 Forney with a Slope-Back Tender**
She runs like a dream.
by Allen K. Littlefield
- 54 **Along the Narrow Gauge**
Two-Foot Lines in the South
Part 1: The Winchester Lumber Company's "Lost River Railroad"
by Mallory Hope Ferrell
- 58 **The 2-6-2T 60 cm Gauge Locomotives and Cars Built During WWI for the U.S. Army**
A sidebar.
by Mallory Hope Ferrell
- 61 **Lighting Up an HOn3 Caboose**
Working Markers, Interior Lights, and a Brakeman with a Lighted Lantern
by Laurie McLean, MMR
- 68 **Muskrat Ramble, An On30 Modular Layout**
Part Three: Pickin' Cotton
by The Tuesday Night Modelers group

- 73 **Making Cotton**
A sidebar.
by Geoff Nott
- 74 **Route to the Redwoods: The On3 North Pacific Coast Railroad and Its Subsidiary, The Buckhorn Logging Co., Part 79:**
Power Tools for the Modeler
by Boone Morrison
- 77 **Rolling Work Tables**
A sidebar.
by Boone Morrison
- 78 **Running a Railroad**
Not just running trains.
by Harry Brunk
- 81 **A Covered Bridge for the HOn3 Glenwood & Black Creek Narrow Gauge**
Trial and Error
by Jim Vail, MMR
- 84 **The Pacific Bridge Company and the Smith Patent Truss Bridge**
A sidebar.
by Jim Vail, MMR
- 86 **The Narrow Gauge Scene**
Jordan Products' Highway Miniatures
More than fifty years.
by Charlie Getz

PLANS

- 28 **The Silver Bell**
by Herb Koenig
- 41 **The Reconstructed El Portal, California, Turntable**
by Jack Burgess, MMR
- 42 **Sierra Railway Mail-Express-Baggage No. 8**
by Gary Caviglia
- 43 **Sierra Railway Passenger-Mail No. 8**
by Gary Caviglia
- 50 **Mace's Grocery**
by Robert D. Bailey
- 53 **Ohio River & Western Railroad 3-foot Gauge Baggage-Mail-Express Car #25**
by Edward H. Cass
- 54 **"Lost River Railroad" #1**
by Henry Temple Crittenden

DEPARTMENTS

- 5 **Robert's Ramblings**
- 6 **Pigeon Hole**
- 12 **In Brief**
- 13 **New in Review**
- 90 **Book and DVD Reviews**
- 97 **Riptrack**

COVER

A double header rolls across the trestle just outside Ophir on Sam Furukawa's Sn3 Silver Sam Juan layout. Photo by Sam Furukawa.



This magazine is printed on recycled paper with a minimum of 10 percent post-consumer content.

The NARROW GAUGE AND SHORT LINE GAZETTE (ISSN 01 48-2122) is published bi-monthly in March, May, July, September, November, and January by Benchmark Publications, Ltd., 800 West El Camino Real, Suite 180, Mountain View, CA 94040. Subscription Rates: (United States) Periodicals mail - \$36.00 per year. Canada - \$45.00 per year. Overseas - \$50.00 per year. U.S. funds please. Periodicals Postage paid at Los Altos, CA 94022 and at additional entry offices. Postmaster send address changes to Narrow Gauge and Short Line Gazette, 800 West El Camino Real, Suite 180, Mountain View, CA 94040. The contents of this magazine must not be reprinted without permission of the publisher. THE NARROW GAUGE AND SHORT LINE GAZETTE incorporates Finelines and The Slim Gauge News. Printed in U.S.A. Copyright 2010 Benchmark Publications, Ltd. All rights reserved. Canadian Post Publication Mail Agreement #41450540. Canadian Return Address: MSI, P.O. Box 2600, Mississauga, ON L4T 0A8.