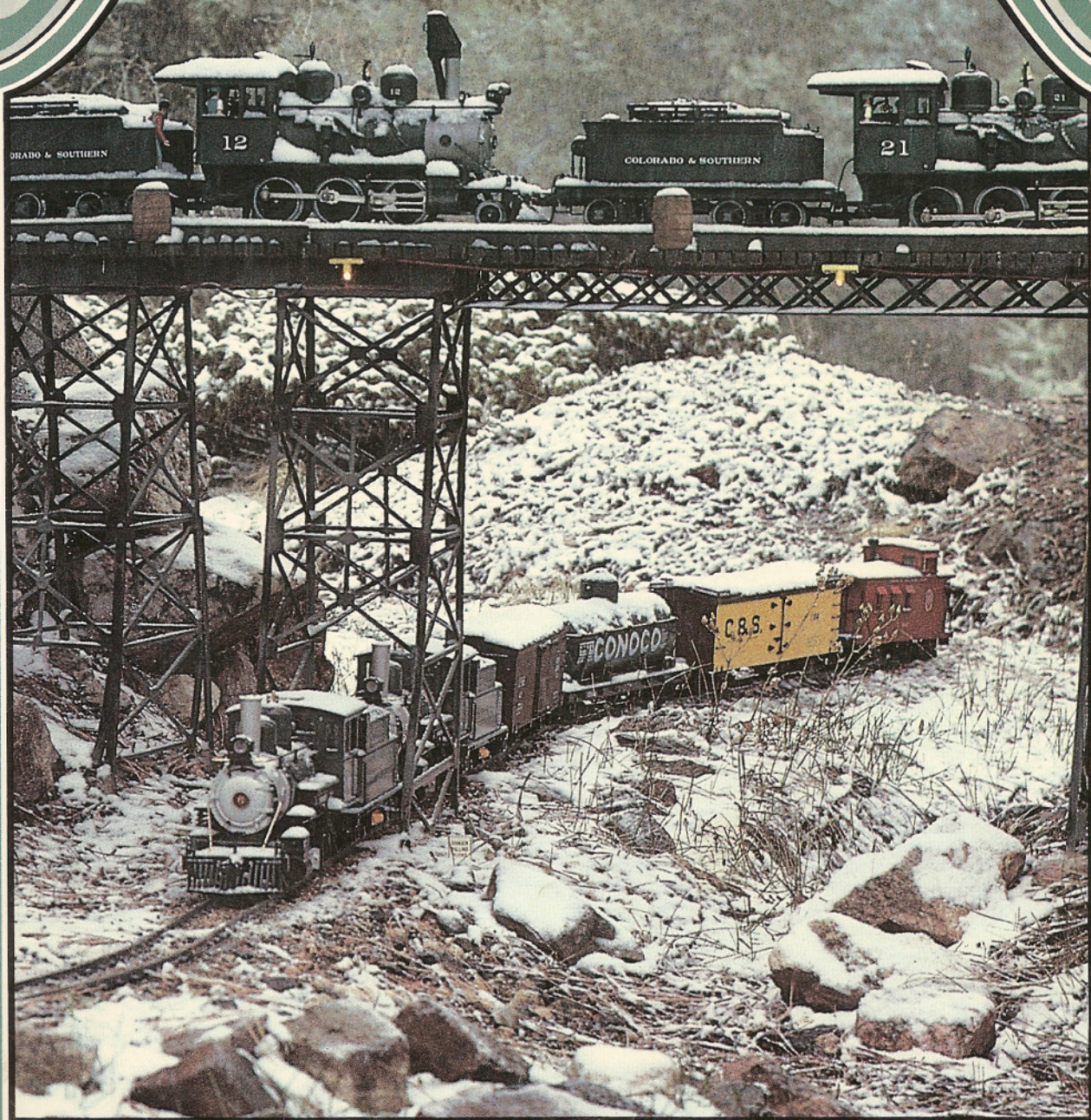


Inexpensive
radio control

January-February 1992

\$3.95
\$4.75 Canada

GARDEN RAILWAYS



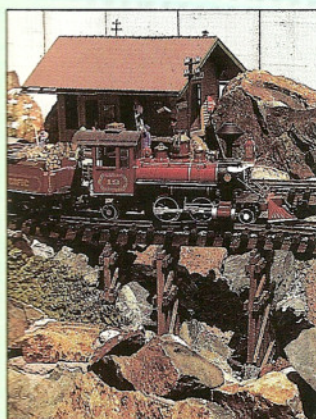
Georgetown Loop in G Scale

Garden Railways

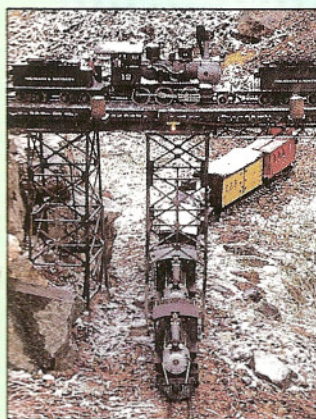
Volume 9, Number 1 • January-February 1992



p. 21



p. 26



p. 35

Features

- 13 A Turntable for All Seasons
David March
- 21 The Alferd Packer
Bart Kister
- 26 The Small World Fantasy Railroad
Trudi Straub
- 35 The Georgetown Loop
Charles Grant
- 42 Scale Vehicles for Your Garden Railway
Jim Frazer
- 52 Inexpensive Radio Control
D.C. de Gruchy
- 57 The Table Saw: Part 2
Don Kinnaman

Departments

- | | | | |
|----|--------------------------------|----|----------------------|
| 6 | Notes & News | 32 | Just for Kids |
| 8 | Letters | 55 | The Railway Gardener |
| 18 | Scribblings on a Workshop Wall | 61 | Product Reviews |

Cover

A double-headed train crosses the Devil's Gate High Bridge on a snowy day. For more on Charles Grant's Georgetown Loop, turn to page 35. —Photo: B. Horovitz

Editor

Marc Horovitz

Associate & Horticultural Editor

Barbara Lilly Horovitz

Circulation Manager

Diana Jensen

Contributing Editors

Bruce Bates

Peter Jones

Chip Rosenblum

Terry (Stumpy) Stone

John Wenlock

Santa Clara, California

Simpson Cross, Wales

Columbus, Ohio

Martins Ferry, Ohio

Wrexham, Wales

Garden Railways (USPS 713-710, ISSN 0747-0622) is published bimonthly for \$21 (\$28, foreign) per year (six issues) by Sidestreet Bannerworks Inc. Second-class postage paid at Denver, Colorado and at other mailing offices.

Copyright 1992 by Sidestreet Bannerworks Inc., all rights reserved. The contents of this publication may not be reproduced in whole or in part by any means without the written consent of the publisher. SUBSCRIPTIONS should be sent to Garden Railways, PO Box 61461, Denver CO 80206 USA. Phone and FAX 303-733-4779. PARCELS should be shipped to Sidestreet Bannerworks Inc., 1040 S. Gaylord, Suite 203, Denver CO 80209. POSTMASTER: Send address changes to Garden Railways, PO Box 61461, Denver CO 80206.