

**12 extra pages of how-to stories!**  
**Get started on your railway: 25 tips**

**25TH**  
**ANNIVERSARY**  
**JUMBO ISSUE**

# Garden RAILWAYS®

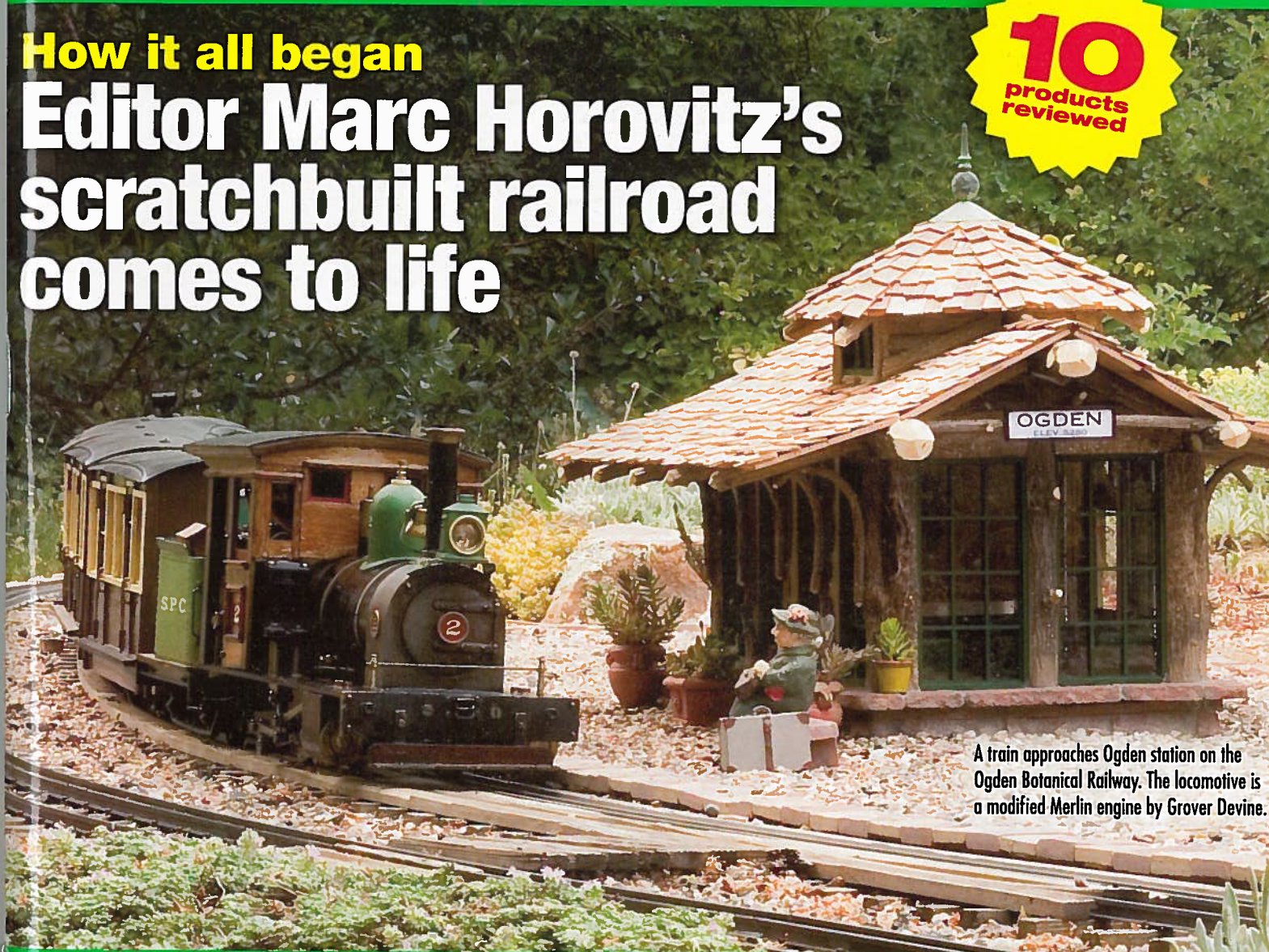
DECEMBER  
2008

[www.GardenRailways.com](http://www.GardenRailways.com)

**How it all began**

**Editor Marc Horovitz's  
scratchbuilt railroad  
comes to life**

**10**  
products  
reviewed



A train approaches Ogden station on the Ogden Botanical Railway. The locomotive is a modified Merlin engine by Grover Devine.

**HOW  
TO:**

- Build a simple structure
- **Renovate your railroad garden**
- Enjoy your line in the winter
- **Convert a flatcar to a gondola**
- Light your buildings

\$7.95



Vol. 25 • Issue 6



# Dec '08

Garden  
RAILWAYS  
**25**  
YEARS

Volume 25 Number 6  
www.GardenRailways.com

## FEATURES



60



88



93

- 56** 25 tips for beginning garden railroaders  
GR's staff offers advice for everyone new (and not so new) to the hobby by *Kevin Strong*
- 60** Light up your railroad  
A guide for permanently wiring your buildings by *Dennis Weide*
- Cover story*
- 66** The Ogden Botanical Railway  
An evolving, scratchbuilt, freelance railway by *Marc Horovitz*
- 76** The Lizard Valley Steam Monorail Company  
An unusual steam-powered railway by *Marc Horovitz*
- 78** Large-scale holiday displays 2008  
Another year, another season of great railways open to the public by *Rene Schweitzer*
- 82** Build a logging train  
Make your own 1:20.3-scale rolling stock with these simple techniques by *Eric Schade*
- 88** Build a steel gondola car  
This heavy kitbash starts with a flatcar chassis by *Bob Santos*
- 93** Garden railway design & construction  
Structures: Simple construction by *Jack Verducci*

## HOW-TO STORIES

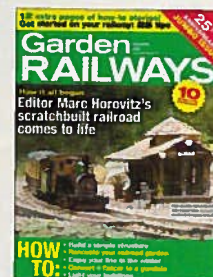
- 23** Garden railway basics
- 39** Greening your railway
- 56** 25 tips for beginning garden railroaders
- 60** Light up your railroad
- 82** Build a logging train
- 88** Build a steel gondola car
- 93** Garden railway design & construction
- 99** Miniscaping

## DEPARTMENTS

- 6** From the Editor  
Notes from Marc
- 10** Notes & news  
What's new for the garden railroader
- 18** Letters  
Views from our readers
- 23** Garden railway basics  
This Old (Ware)house: part 2
- 37** Looking back  
A glance into the history of garden railroading
- 39** Greening your railway  
The winter landscape: dormant, yet alive
- 45** Plant portraits  
Dwarf Norway spruce
- 99** Miniscaping  
Renovating your railroad garden
- 104** Scribblings on a workshop wall  
Gn15—bush engineering
- 107** Online station  
A large-scale guide to the Internet
- 109** Raising steam  
Locomotive fittings: part 2
- 111** Events  
Upcoming shows and exhibits
- 116** Product reviews  
Bachmann's Davenport, Accucraft's WD Baldwin in steam, and much more
- 136** If I'd only known...  
A bridge disaster

## ON THE COVER

- Get started on your railway **56**
- Marc Horovitz's railway **66**
- 10 products reviewed **116**
- Build a simple structure **93**
- Renovate your railroad garden **99**
- Enjoy your line in the winter **39**
- Convert a flatcar to a gondola **88**
- Light your buildings **60**



CELEBRATING **75** YEARS  
KALMBACH PUBLISHING CO. SINCE 1934

**RIGHT:** A passenger train hauled by an old Roundhouse "Dylan" approaches Ogden on the Ogden Botanical Railway.